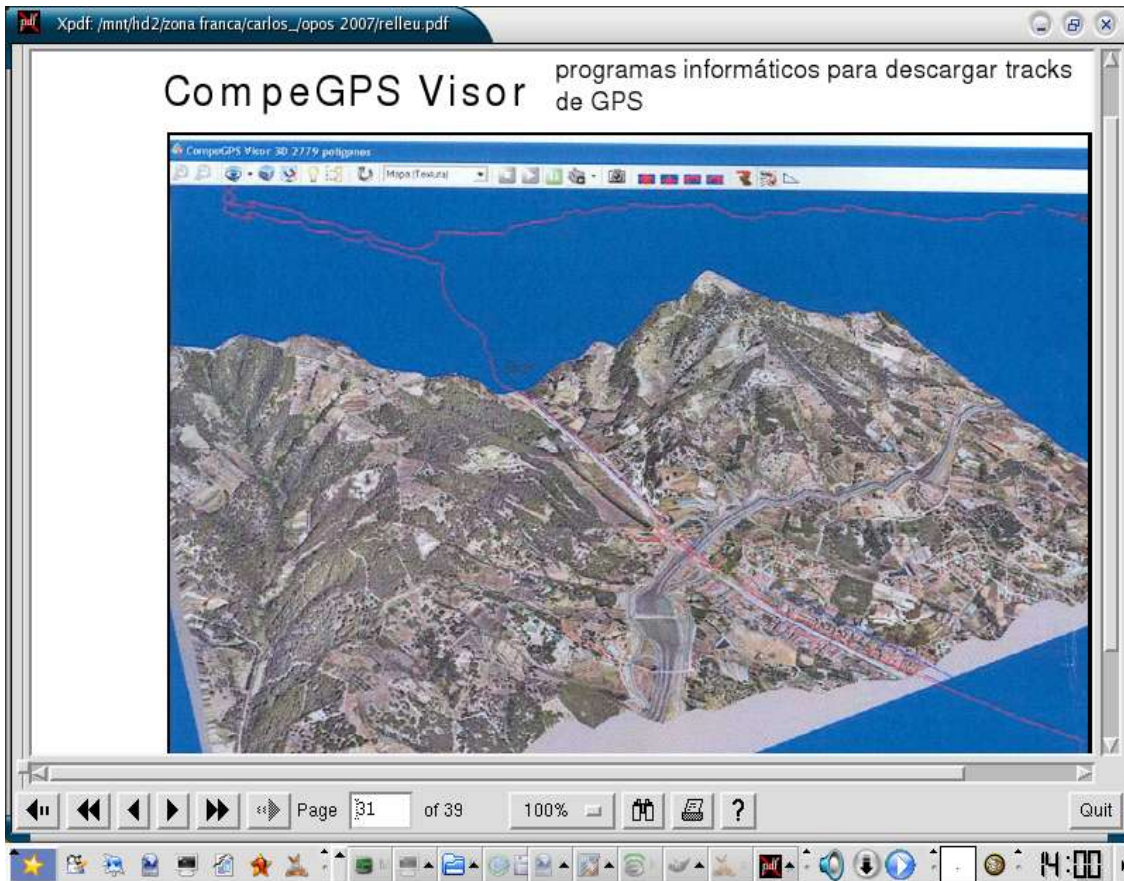
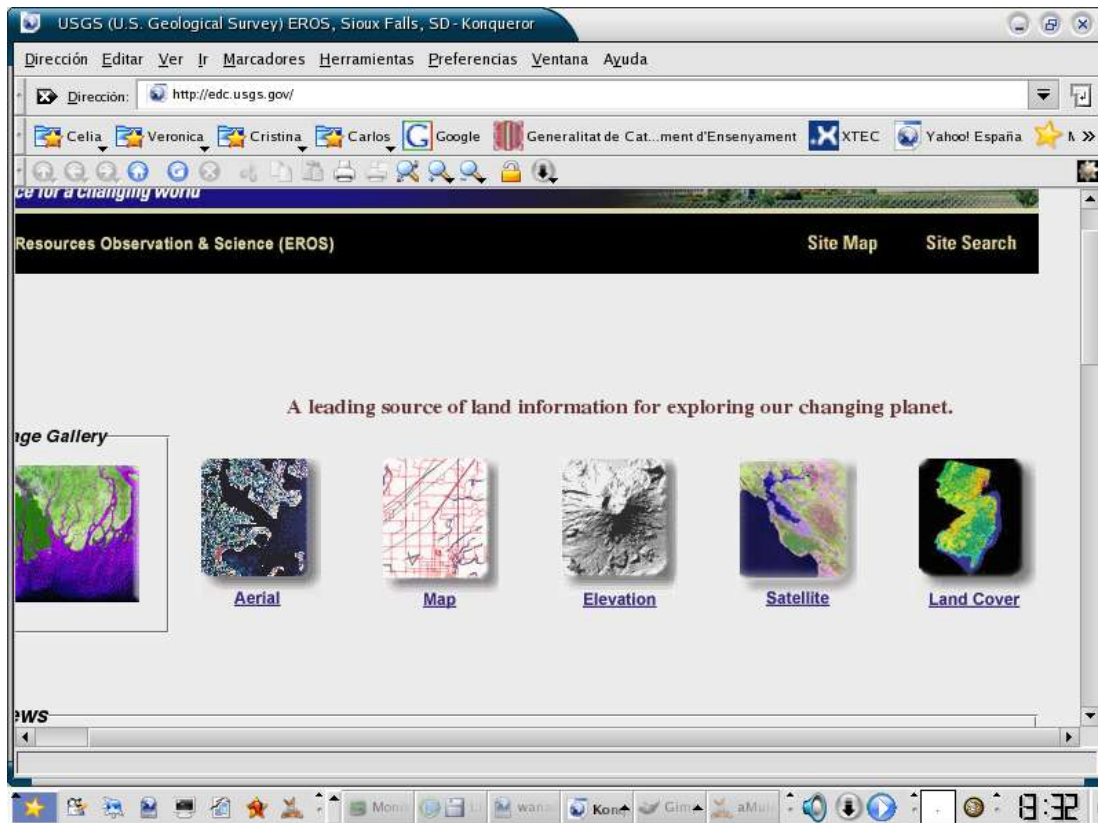
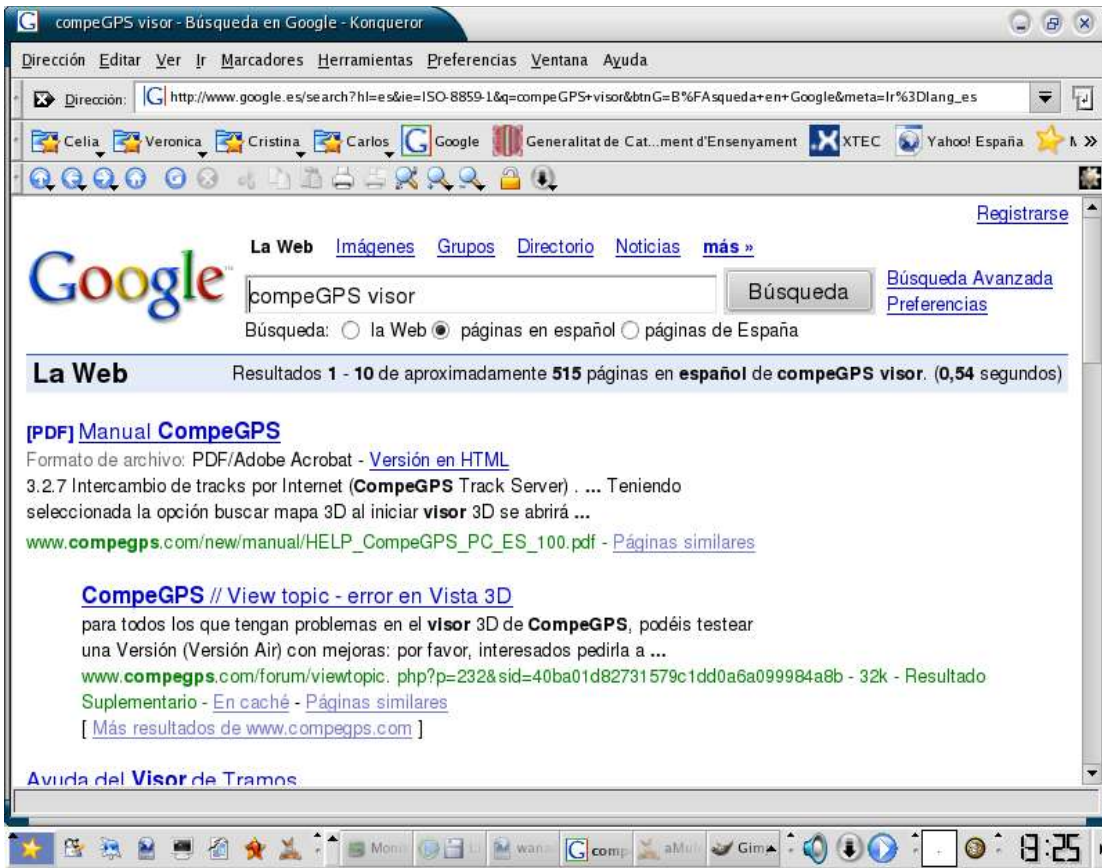


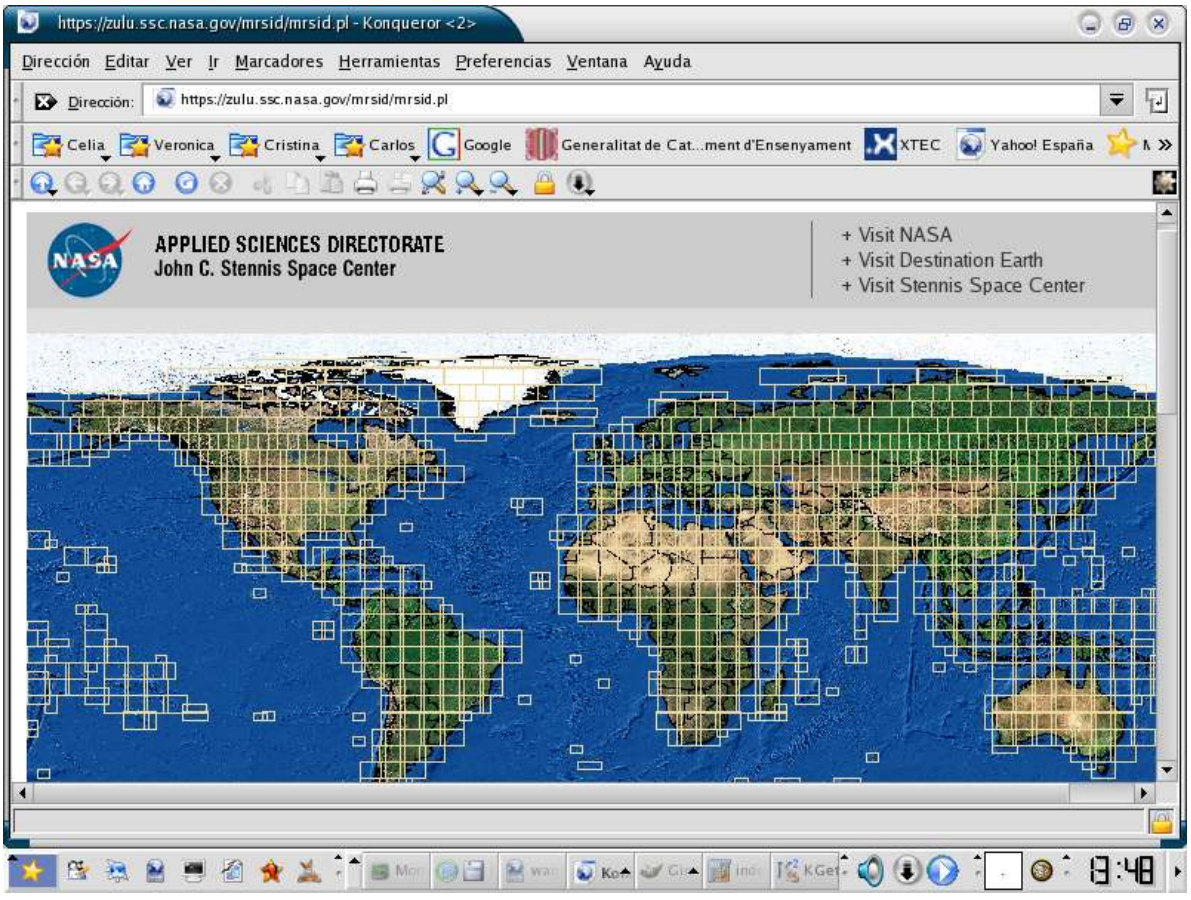
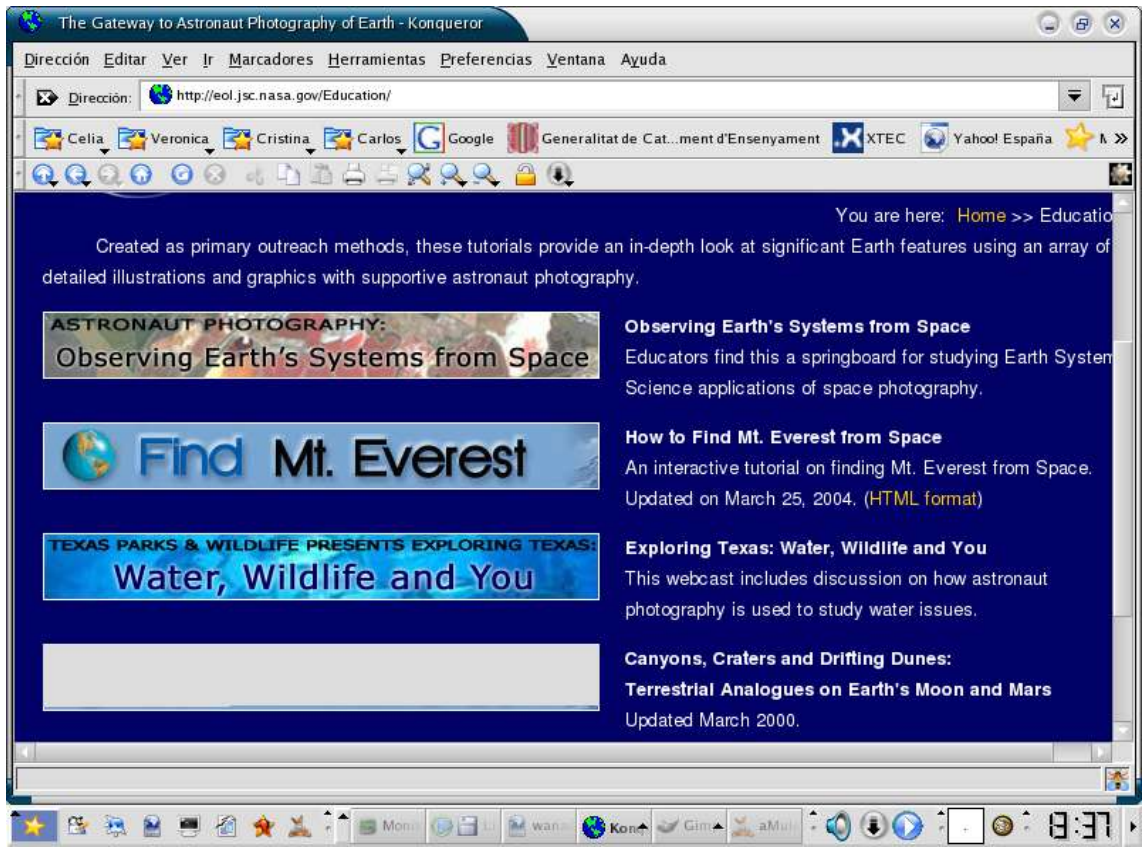
Hola Angel!

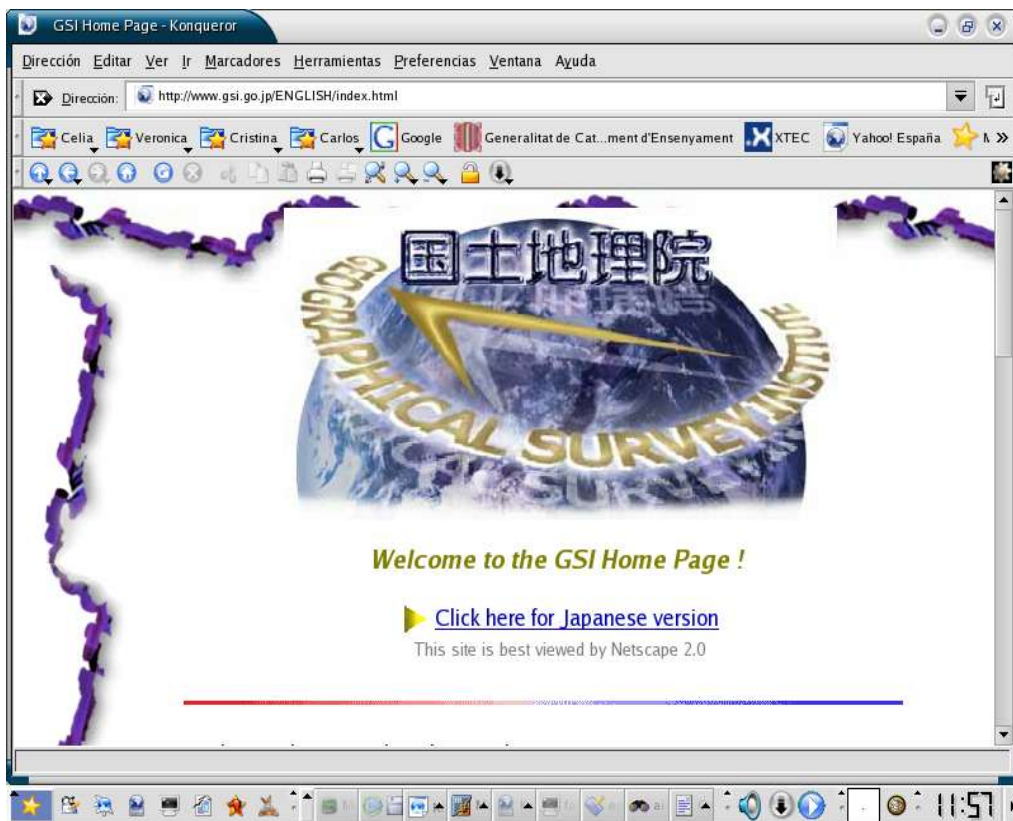
Per a que pesi menys i passi les pàgines que he visitat a arrel d'una informació que vaig trobar en l'universitat de magisteri assignatura socials. M'explico. Proposen als futurs mestres d'utilitzar per ensenyar la geografia un programa de gps compatible amb pc: compGPS. Et permet descarregar mapes normals, aeris, 3d.

Et passo a continuació l'aventura de búsqueda que fins i tot m'ha portat a una pàgina en japonès com podràs veure.









USGS (U.S. Geological Survey) EROS, Sioux Falls, SD - Konqueror

Dirección Editar Ver Ir Marcadores Herramientas Preferencias Ventana Ayuda

Dirección: http://edc.usgs.gov/products/aerial.html

Celia Veronica Cristina Carlos Google Generalitat de Cat...ment d'Ensenyament XTEC Yahoo! España

Aerial Products	Description	Search/Order
High Resolution Scanned	Digital aerial and satellite imagery created from film products in the USGS archive. Output produced by a high-resolution flatbed scanner.	Earth Explorer
Medium Resolution Digitized	Digital aerial and satellite imagery created from film products in the USGS archive. Output produced by a digital camera system.	Earth Explorer
National Aerial Photography Program (NAPP)	Recent, high-quality aerial photos covering the conterminous U.S. on five- to seven-year cycles (1987 - present).	PhotoFinder Earth Explorer
National High Altitude Photography (NHAP)	High-altitude aerial photos for the conterminous U.S. (1980 - 1989).	Earth Explorer
Historical Photos	Aerial photos from a variety of sources (1939 - present).	Earth Explorer
Index/Mapping Photography	Aerial photos referenced as photo indexes from a variety of sources (1940's - 1980's).	contact us
Digital Orthophoto Quadrangles (DOQs)	Digital images of aerial photos which combine the image characteristics of the photo with the georeferenced qualities of a map (1987 - present).	Earth Explorer
High Resolution Orthoimagery	Recent (2002-2003) orthoimagery with a resolution of 0.3 meters to 0.75 meters for the major metropolitan areas and state capitals of the United States. As more areas are received, they will become available for distribution.	Seamless Data Distribution System (SDDS)

8:34

Mapa descarregat per vore'l amb el programa.



Un altre mapa

