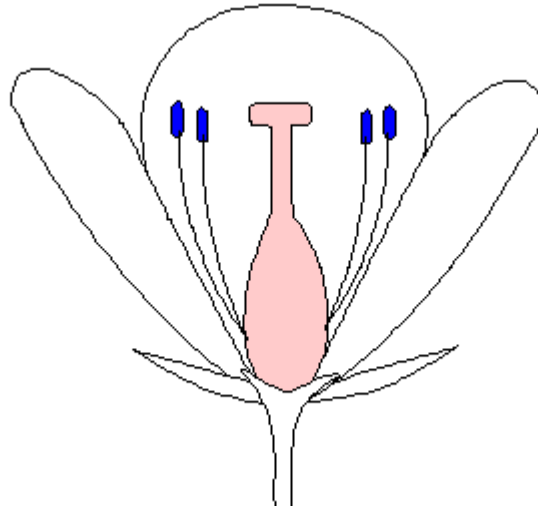


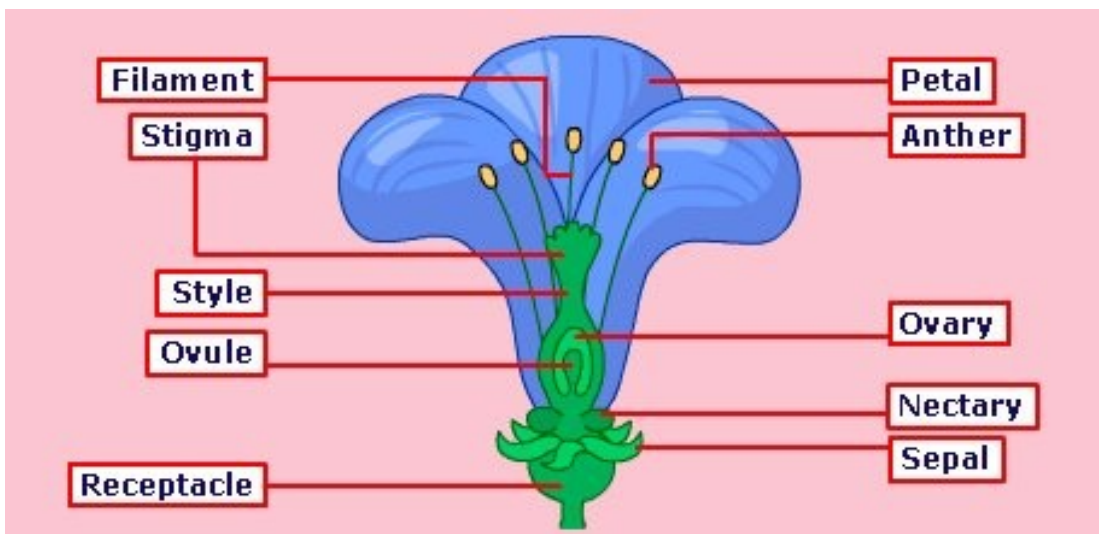
Plants

1. Colour the male parts of the flower **blue** and the female parts **pink**.



2. Add the pollen and eggs to the diagram.
3. Label the diagram using the following words:

Stigma	Receptacle	Ovary	Style	Anther
Filament	Sepal	Petal	Ovule	Nectary



4. Complete the table by matching up the name of the part with what it does.

Part	Job
Stigma	is sticky to catch the pollen
Filament	holds the anther up
Receptacle	is where the parts of the flower are attached
Sepal	protects the flower while it is still a bud
Ovary	Contains the ovules (or "eggs").
Petal	attract insects and help to protect the other parts of the flower
Style	holds up the stigma
Carpel	is the female part o the flower where seeds are made
Anther	produces the pollen
Nectary	make nectar
Stamen	are the male parts of the flower

- attract insects and help to protect the other parts of the flower.
- protects the flower while it is still a bud.
- make nectar.
- is the female part o the flower where seeds are made.
- is sticky to catch the pollen.
- holds up the stigma.
- contains the ovules (or "eggs").
- are the male parts of the flower.
- produces the pollen.
- holds the anther up.
- is where the parts of the flower are attached.

5. Name the three parts of the carpel.

Stigma

Style

Ovary