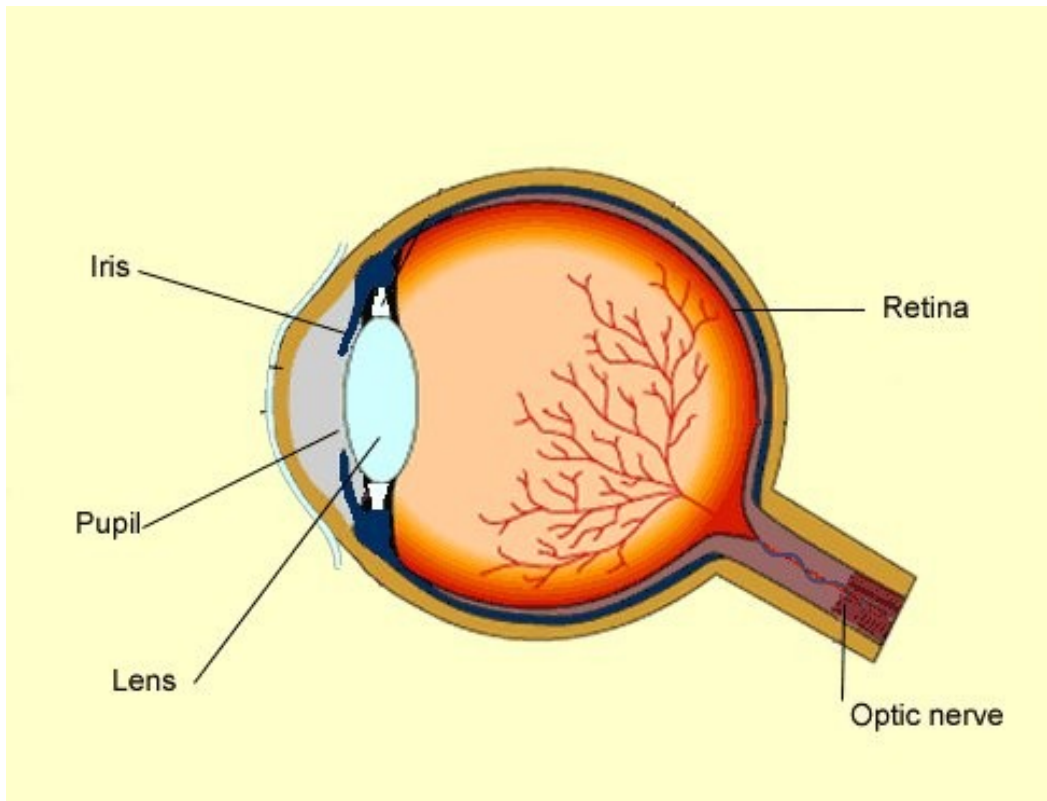


The eye

1. Label the diagram of the eye.



Complete the table

Part	Name	What it does
A	Iris	It's the coloured part of the eye. It controls the amount of light entering the eye.
B	Pupil	It's the hole which light enters.
C	Lens	Focuses light
D	Retina	It is located at the back of the eye. It is sensitive to light and colour
E	Optic Nerve	Sends information to the brain