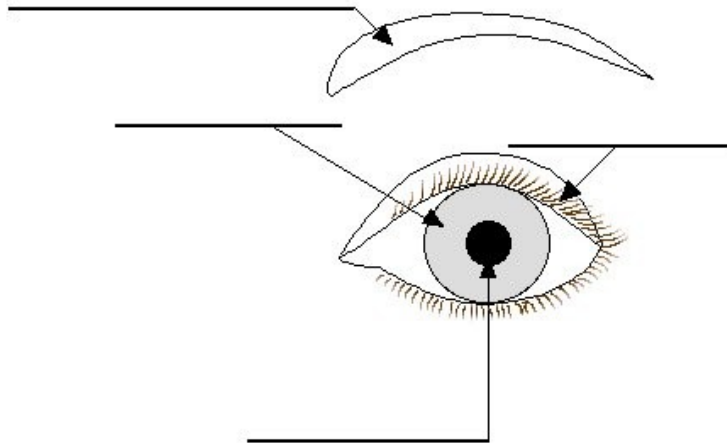


The eye

1. Label the main parts of the eye:
Iris - eye lashes -eyebrow - pupil



2. Write down 2 ways the eye is protected.

3. The iris is the coloured part of the eye. Survey the class to find out:

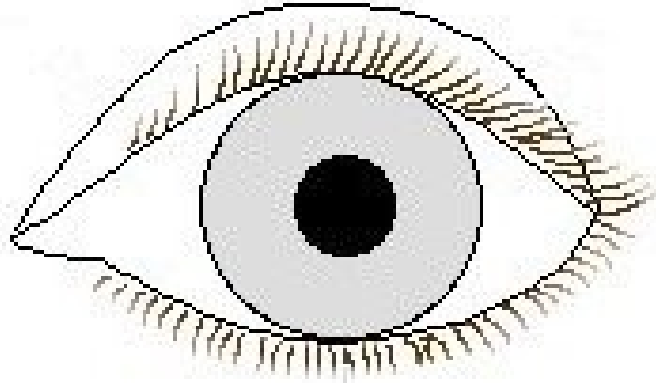
How many different colours are there?

The most common eye colour _____.

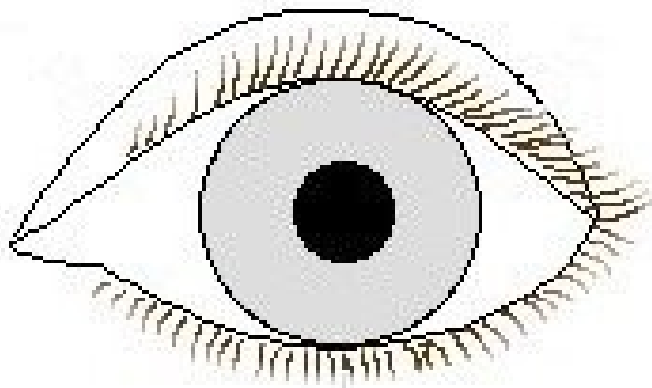
The least common eye colour _____.

4. Working in pairs use the torch and blindfold to investigate the size of the pupil in dim and bright light. Record findings.

Dim light



Bright light



What did you find out?

Why do you think this happened?