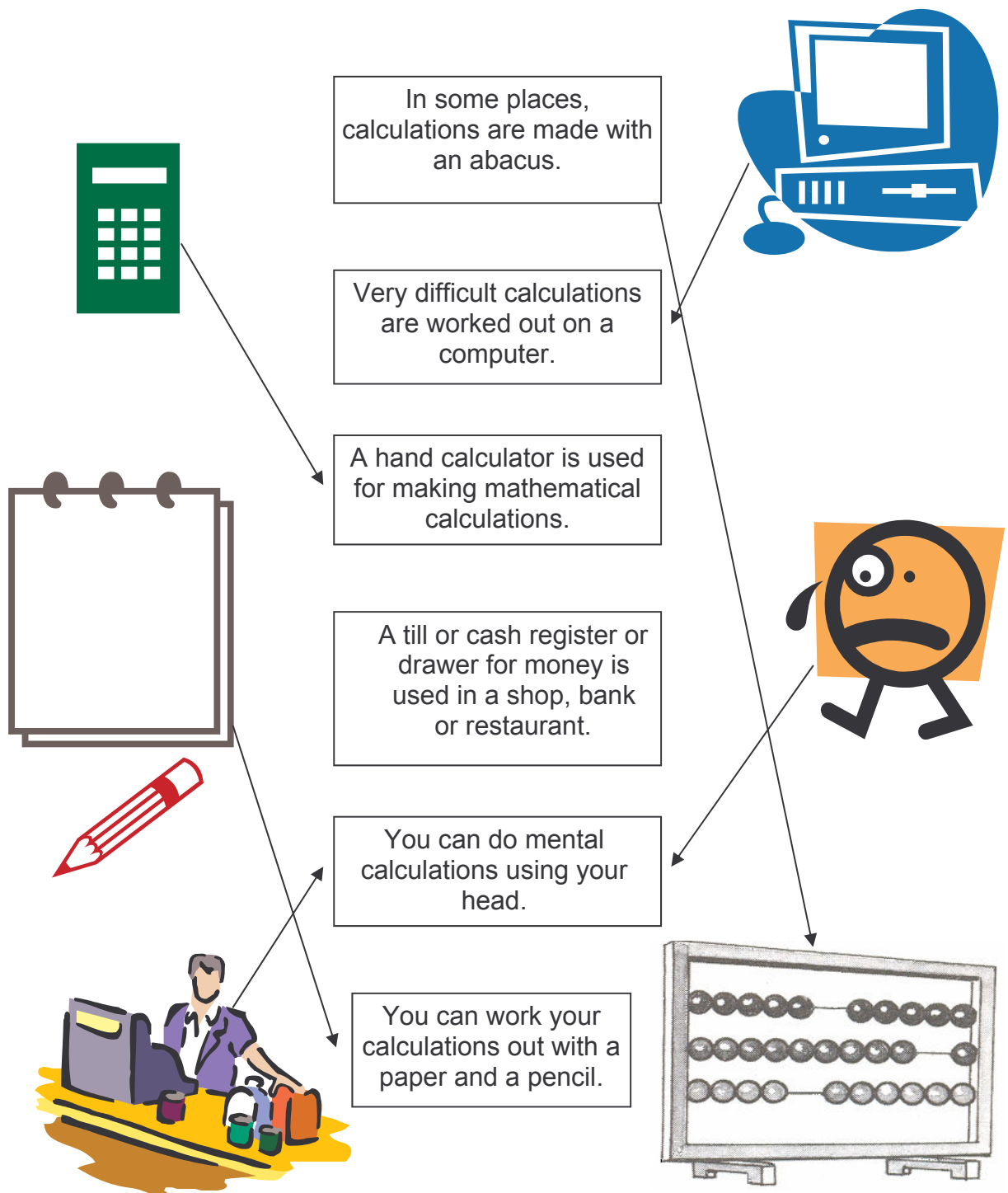


Dealing With Numbers 1

KEY

Page 2: Calculation.



Page 3: Addition.

- a. 45
- b. 117
- c. 725
- d. 941
- e. 2000
- f. 2550
- g. 4170
- h. 58,581
- i. 80,311
- j. 6,957,738

Page 4: Practise.

- 1. $2+4+6+8+10+12=42$; or $4+6+8+10+12+14=54$
- 2. $65+35-15=85$
- 3. $450-125+75=400$
- 4. 79,600
- 5. 987,430
- 6. 34,789
- 7. Hundreds
- 8. 89,756
- 9. $6974+861=7835$

Add for the planet:

380 gal = 1,438.77 liters

1 ton = 1016 kg (USA 907kg)

Page 5: Subtraction.

- a. 5
- b. 46
- c. 125
- d. 223
- e. 150
- f. 800
- g. 975
- h. 51,300
- i. 60,515
- j. 6,304,271

Page 6: Practise.

1. By 3000.
2. 18.949
3. 373 minutes.
4. About 275 days.
5. 368, 386, 638, 683, 836, 863.
6. 1010, 1009, 925, 807, 708, 81, 78.
7. 904,106.
8. 1,000,321.
9. 709, 710, 4412, 8316, 78,645, 92,501.
10. 1540.

Big: greater, bigger, more, largest, highest.

Small: smaller, less, lowest.

Page 7: Practise.

1. Lake Chad is in Chad, Central Africa, next to the borders of Cameroon, Nigeria and Niger.
2. $17,800 - 3900 = 13,900 \text{ km}^2$.
3. Next three questions are to be discussed with children. They can write their answers with a few words in English or in Catalan.

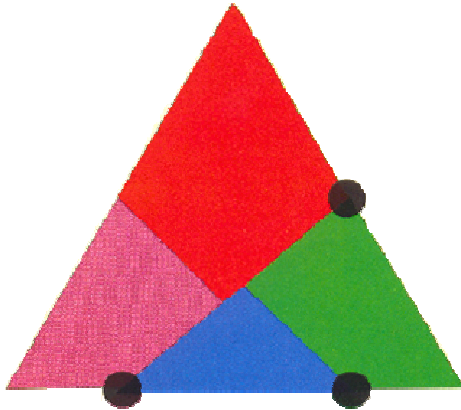
Page 10: Practise.

1. 3,600,000 (9 multiplied by 4 and add the 5 zeros).
2. 130.
3. 8.05pm
4. €6.7.
5. 50 children play football.
6. €1600.
7. 0.85.

Page 12: Practise.

1. 1185.
2. 28. Dividing.
3. 128
4. 30kg.
5. 0.45.
6. $0.8 \times 130 = 104$ (80%).
7. 19.
8. The largest number is 404.

The hinged square:



You will get an equilateral triangle.

Page13: Mixing operations.

Allow the children to try these calculations in different ways and discuss about it. It is important that they see how results change when doing operations in different order.

When you work out a problem it is very important to do operations in the right order to ensure the correct result.

1. a. $9 + 2 \times 6 - 3 = 9 + 12 - 3 = 9 + 9 = 18$
- b. $67 + 18 - 6 = 85 - 6 = 79$
- c. $6 \times 2 + 8 = 12 + 8 = 20$
- d. $5 \times 15 - 14 = 75 - 14 = 61$
- e. $(9 + 18) \div 9 + 2 = 27 \div 9 + 2 = 3 + 2 = 5$
- f. $40 + 6 - (3 + 5) = 46 - 8 = 38$