

PLANTS (teacher's notes)

FLOWERS, FRUITS AND SEEDS

About flowers:

- Angiosperms are the plants that produce flowers.
- If everything is fine the bud will develop into a flower.
- Depending on the plant, the sepals will remain or not in the flower.
- Some flowers have more than one pistil.
- Some plants have the female and the male parts in the same flower, other plants have them in different flowers or there are also plants that have their flowers in different plants.

About pollination:

There is self-pollination (the pollen comes from the same plant) and cross-pollination (the pollen comes from another plant from the same species). Animals (insects, birds...) are attracted to the flowers by their bright colours, by nectar (food) and by sweet scents.

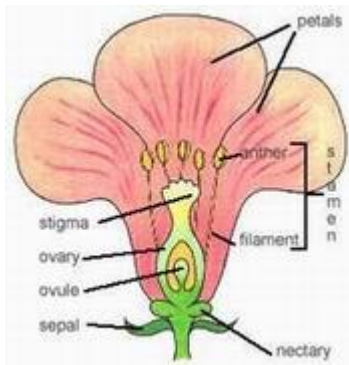
About fertilization:

If you open a pea pod and one of the peas hasn't grown it's because it hasn't been fertilized

About seeds and fruits:

- The seeds of a conifer tree are not contained in fruits, they are contained in cones!
- Animals can disperse seeds or fruits by eating them and passing them out in their droppings or hiding them. Some seeds or fruits catch on to animals' fur.
- Seeds or fruits dispersed by water have a waterproof shell.
- Seeds or fruits dispersed by wind are light.

Activity 2: Let's look at the parts of a flower!



The pistil is also called carpel.

Llicència de la modalitat C concedida pel Departament d'Educació i Universitats de la Generalitat de Catalunya (2006-2007)

Autora: M. Carme Gilart Barranquero

<http://www.plantlife.org.uk/poppy/interactive.htm>

An ovule is the female reproductive cell.

A pollen grain is the male reproductive cell.