

# BIRDS in the PLAYGROUND

Lola Anglada School

Esplugues de Llobregat

IDENTIFIED BIRD: *Robin*

Ornithologist: *Roser (15)*

Date: *Wednesday 29<sup>th</sup> of October*

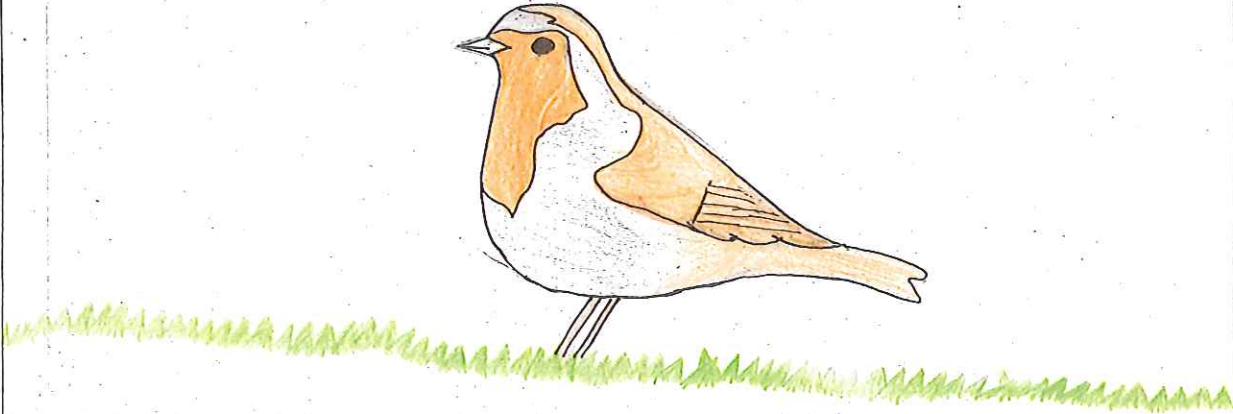
Time: *10:30 am*

Place in the playground: *On a Tree*

## TAMANY

— sparrow		= sparrow	×	+ sparrow	
— pigeon	×	= pigeon	..	+ pigeon	

## GENERAL COLOUR AND SHAPE



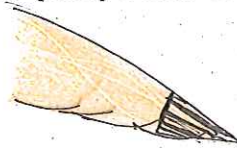
REMARKABLE COLOURS.

IN WHICH PART OF ITS BODY.

## BEAK AND HEAD (shape and colour)



## WINGS (shape and colour)



## TAIL (shape and colour)



## LEGS (shape and colour)



## BEHAVIOUR

