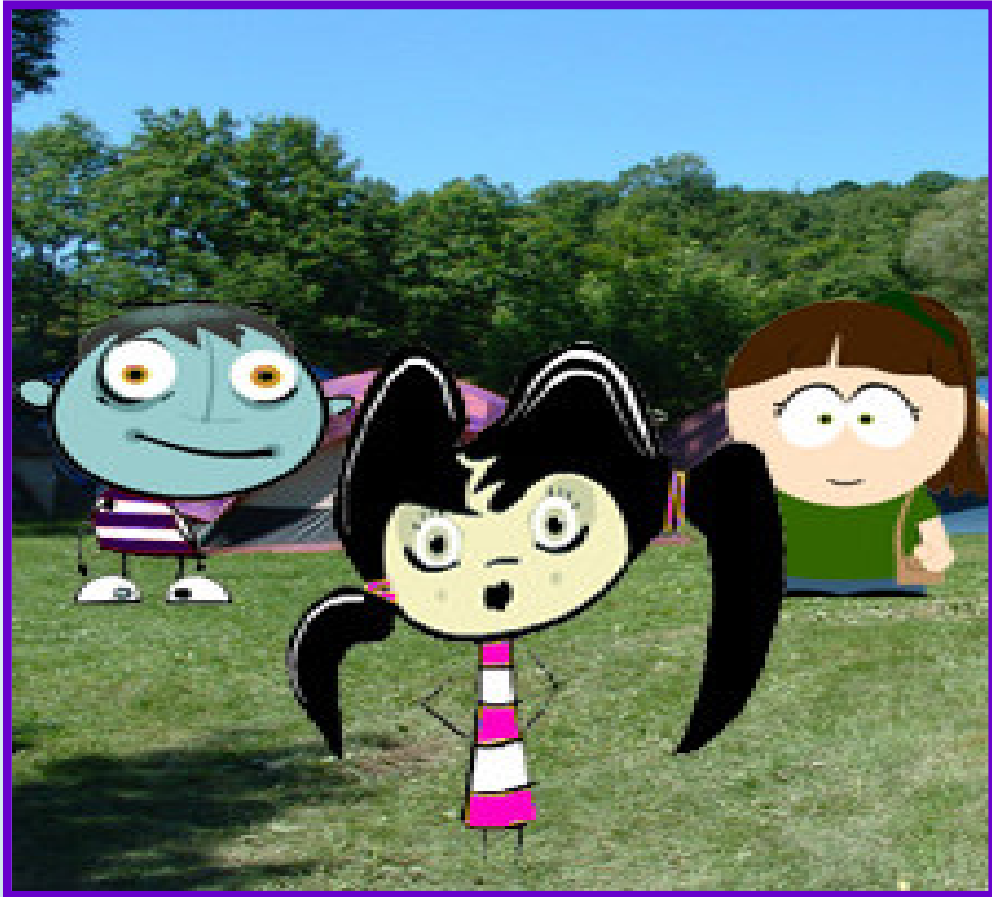
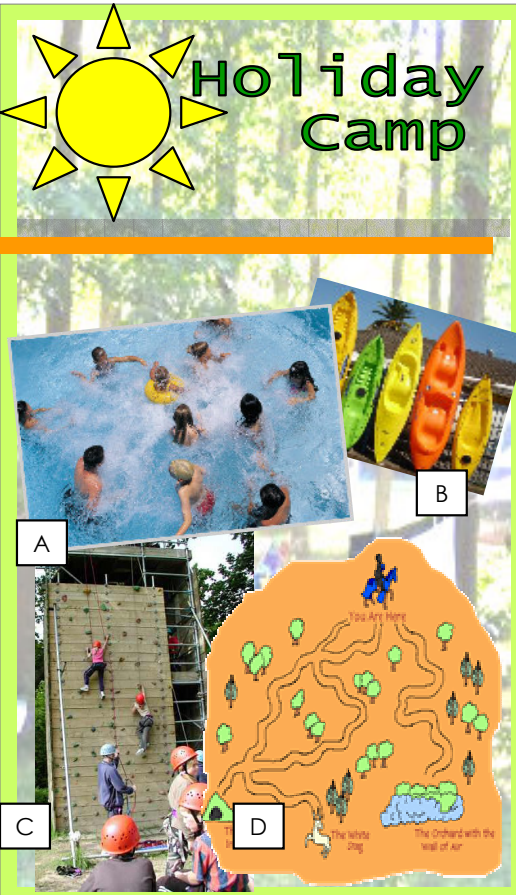


# Freaky



Primary show (7-12)



What you need to bring:

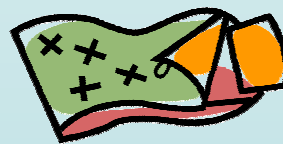
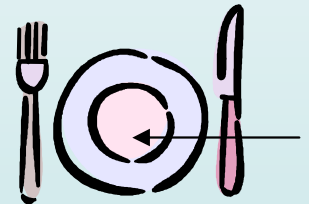
- ✓ Tent
- ✓ Sleeping bag
- ✓ Compass
- ✓ Plate
- ✓ Rucksack
- ✓ Torch

Camp rules:

- No bullying
- No mobiles, playstations etc...
- No rubbish
- Bed at 23:00h
- Don't leave the camp

Personal information

Name:.....  
 Address:.....  
 Age:.....  
 Favourite activity:.....



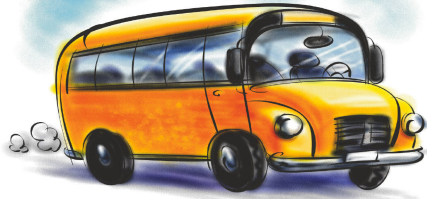
**VERB**

1. sleep
2. eat
3. sleep
4. see
5. carry
6. navigate

**OBJECT**

- a) a **rucksack**
- b) in a **tent**
- c) off a **plate**
- d) with a **compass**
- e) in a **sleeping bag**
- f) with a **torch**

# We're going on the bus



Going on the **bus**  
We're going on the **bus**  
Going on the **bus**  
Yeh, we're going on the **bus**

Going on the **bus**  
We're going on the **bus**  
Going on the **bus**



We're going to **swim**  
We're going to **camp**  
We're going to **sing**  
We're going to **dance**

We're going to **swim**  
We're going to **camp**  
We're going to **sing**  
We're going to **dance**



Going on the **bus**  
We're going on the **bus**  
Going on the **bus**  
Yeh, we're going on the **bus**

Going on the **bus**  
We're going on the **bus**  
Going on the **bus**  
Yeh, we're going on the **bus**



It's going to be fun  
It's going to be cool  
It's going to be great, Cuz  
It's nothing like **school** X2



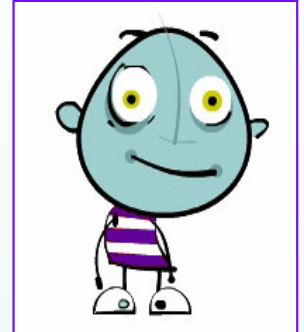
# Eevi



# Spud



# Freaky



Eevi is 11 years old. She likes chocolate, dancing. She is scared of the dark and spiders.

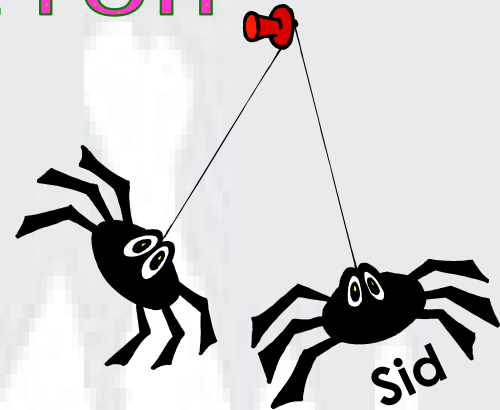
Spud is 10 years old. She likes chocolate and camping. She hates dancing and is scared of the dark and spiders.

Freaky is 10 years old. He likes the dark, dancing and spiders. He's scared of bright lights.

	Likes 😊	Scared of 😨
Eevi		
Freaky		
Spud		

	You	Friend 1	Friend 2
What do you like?			
What are you scared of?			

# Dance competition



**Evie:** Hey there's a dance competition

**Spud:** A what?

**Evie:** A dance competition, I love dancing

**Freaky:** I love dancing too.

**Evie:** You? Ha!

**Spud:** I don't like dancing

**Evie:** Yeh, because you can't dance. I'm a great dancer. I'm going to win the competition

**Spud:** Are you going to dance?

**Freaky:** Yes, why not?

**Evie:** Because you can't dance. You're just a freak.

**Spud:** Don't listen to her

**Evie:** Come on Spud. I don't like Freaky – he's weird. Aghh, a spider!!!

**Spud:** Ugghh!!

**Freaky:** That's my pet spider. Come here Sid.

**Evie:** Sid? Sid the spider? Ugh, I hate spiders. You really are weird. Come on Spud, it's time for bed.

## Feelings



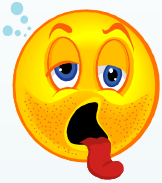
Happy



Sad



Hungry



Thirsty



Angry



Scared

A B C D E F G H I J K L M N O P Q R S T U V W X Y Z

	Feeling	When or where?
1.		
2.		
3.		
4.		
5.		
6.		

What makes you feel happy?

What makes you feel sad?

# BULLYING QUIZ



1. Who is the "bully" and who is the "victim"?

a) 1  
b) 2

2. How does the victim feel?

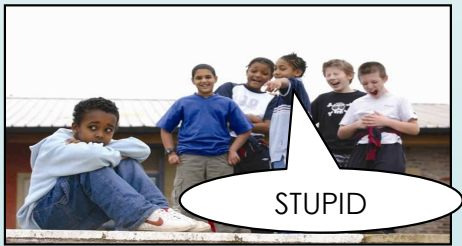
a) hungry  
b) angry  
c) happy  
d) scared

3. How does the bully feel?

a) hungry  
b) angry  
c) happy  
d) scared

4. Which one is NOT bullying?

Calling names



a

Violence



b

Being friends



c

Not talking to people



d

5. If a "bully" is horrible to you. What should you do?

Hide



a

Eat a banana



b

Say "no" and tell an adult



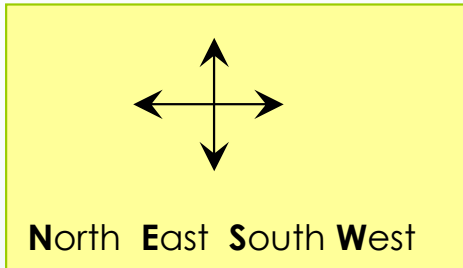
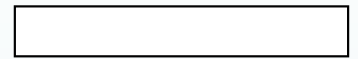
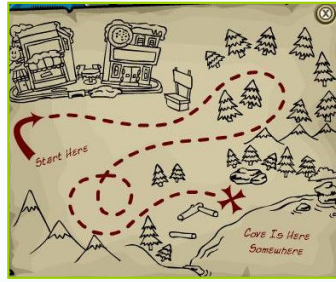
c

Cry



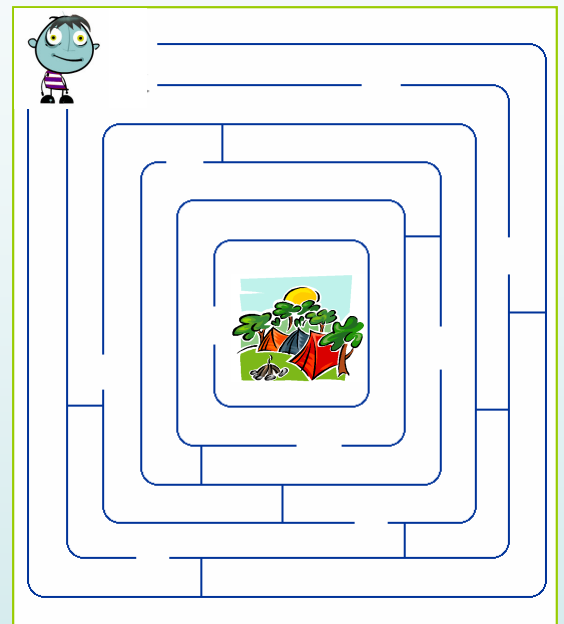
d

Freaky, Spud and Eevi get lost in the forest. To find their way they need to use a **map** and a **compass**.

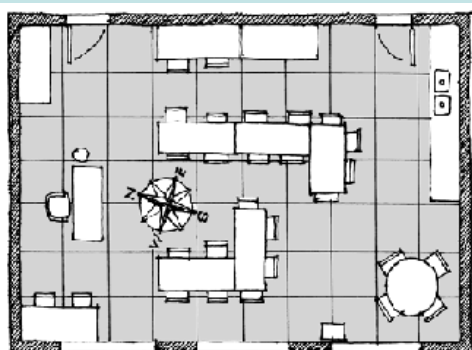
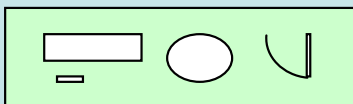


Freaky is lost!

1. Draw a **moon** to the **north** of the house
2. Draw 2 **trees** **east** of the house
3. Draw a **cat** in the **south**
4. Draw 3 **car** to the **west** of the house



Draw a plan of your classroom, use these symbols:





# Post show questionnaire

Draw something from the show.

Which character did you like?

Which character didn't you like?

Who was the bully?

- a) Freaky
- b) Spud
- c) Eevie

What was Freaky's pet?

Where did they sleep?

- a) Bed
- b) tent
- c) school

How much did you enjoy the show from 1-10

1= very bad  
10= very good

Would you like to see another Blue Mango show?

- Yes
- No
- I don't know