

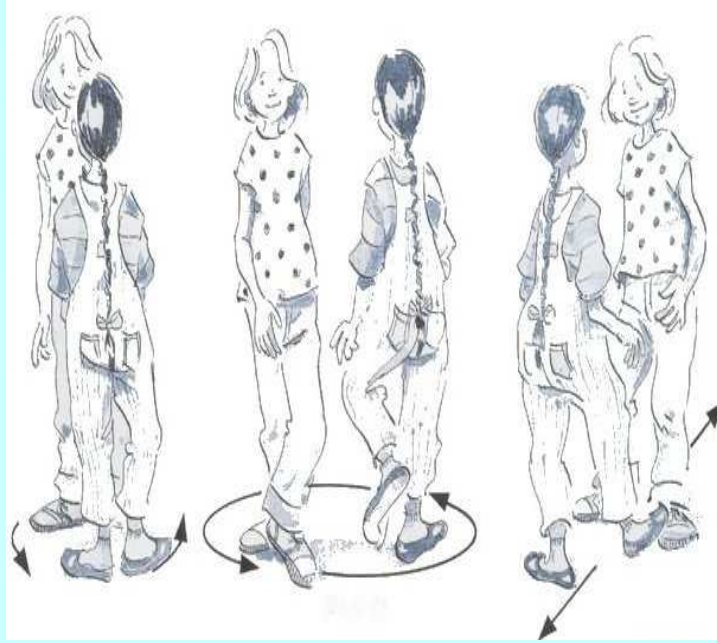
*

A LONG SET

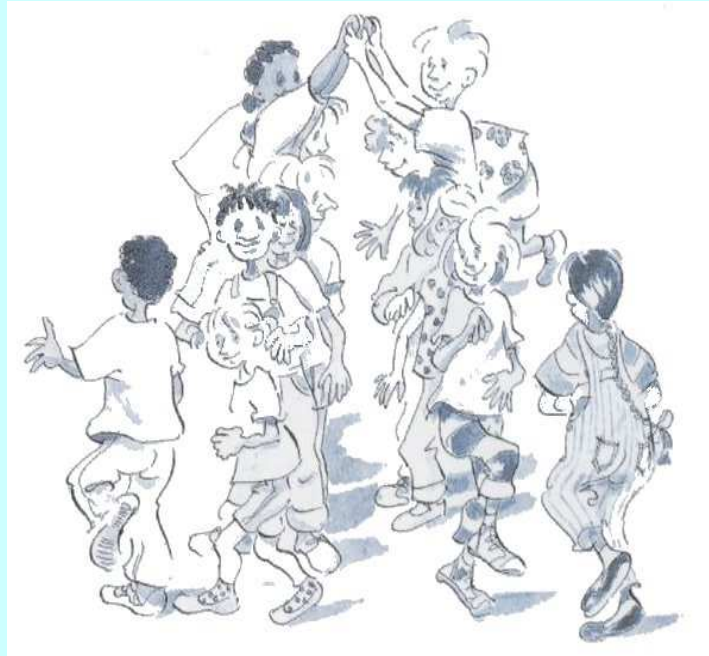


2

AN ARCH



BACK-TO-BACK



CAST-OFF AND ARCH



*

THE GALLOP



*

THE GRAND CHAIN



2

OVER THE TOP



*

PROMENADE



3

THE SNAIL



2

LEFT-HAND STAR



*

RIGHT-HAND TURN



*

LEFT-HAND TURN



3

THREAD THE NEEDLE



2

THROUGH THE TUNNEL



*

SWING

*Pictures from BBC Folk Dance, Educational Publishing.

²Pictures from EFDSS Dancing Folk.

³Pictures from BOORMAN, P. and others, Physical Education ages 9-11.