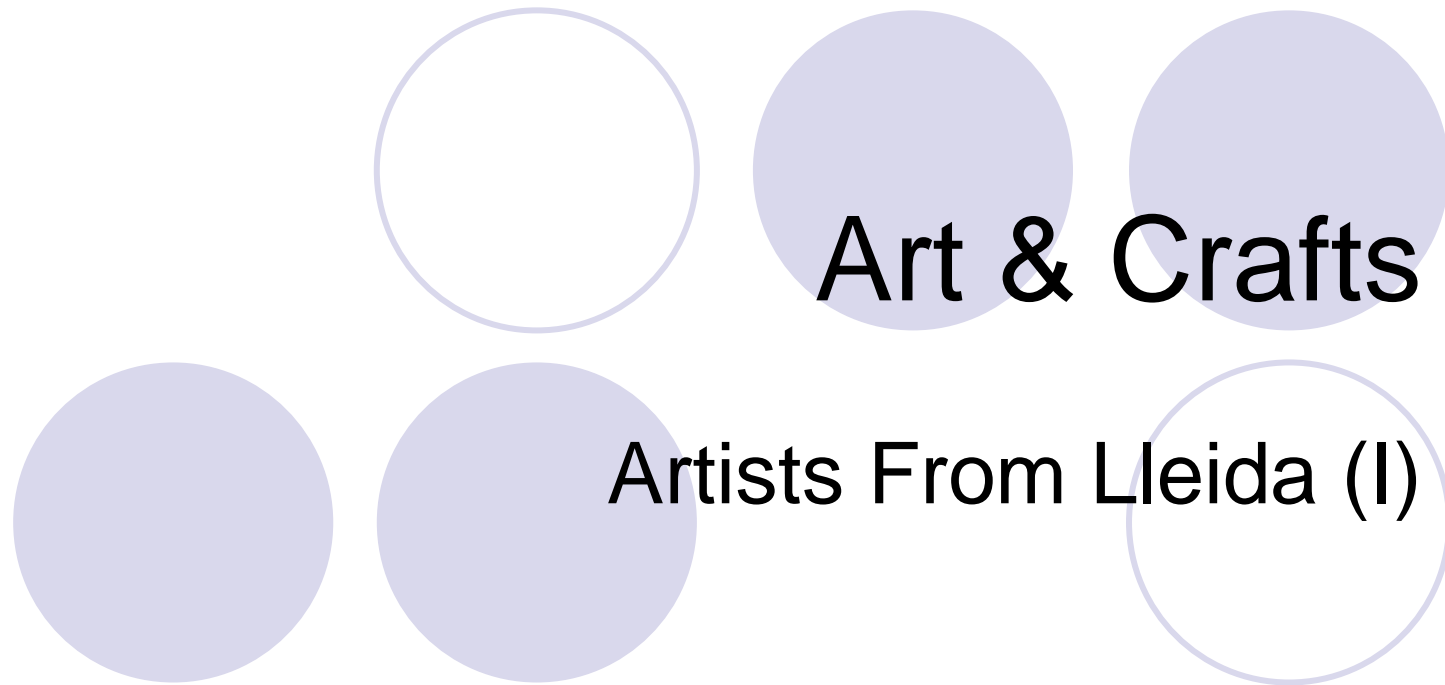


Laia Griñó
CEIP ELS TIL·LERS
Artesa de Lleida

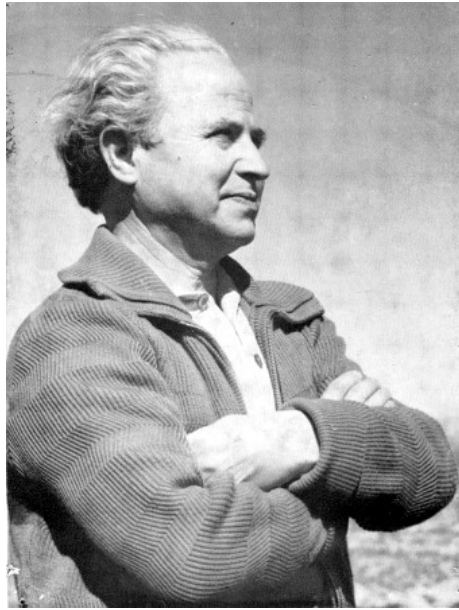


Art & Crafts

Artists From Lleida (I)

What can you explain looking at these pictures...

1908



His name is Leandre Cristòfol

He was born in 1908

He was born in Ós de Balaguer

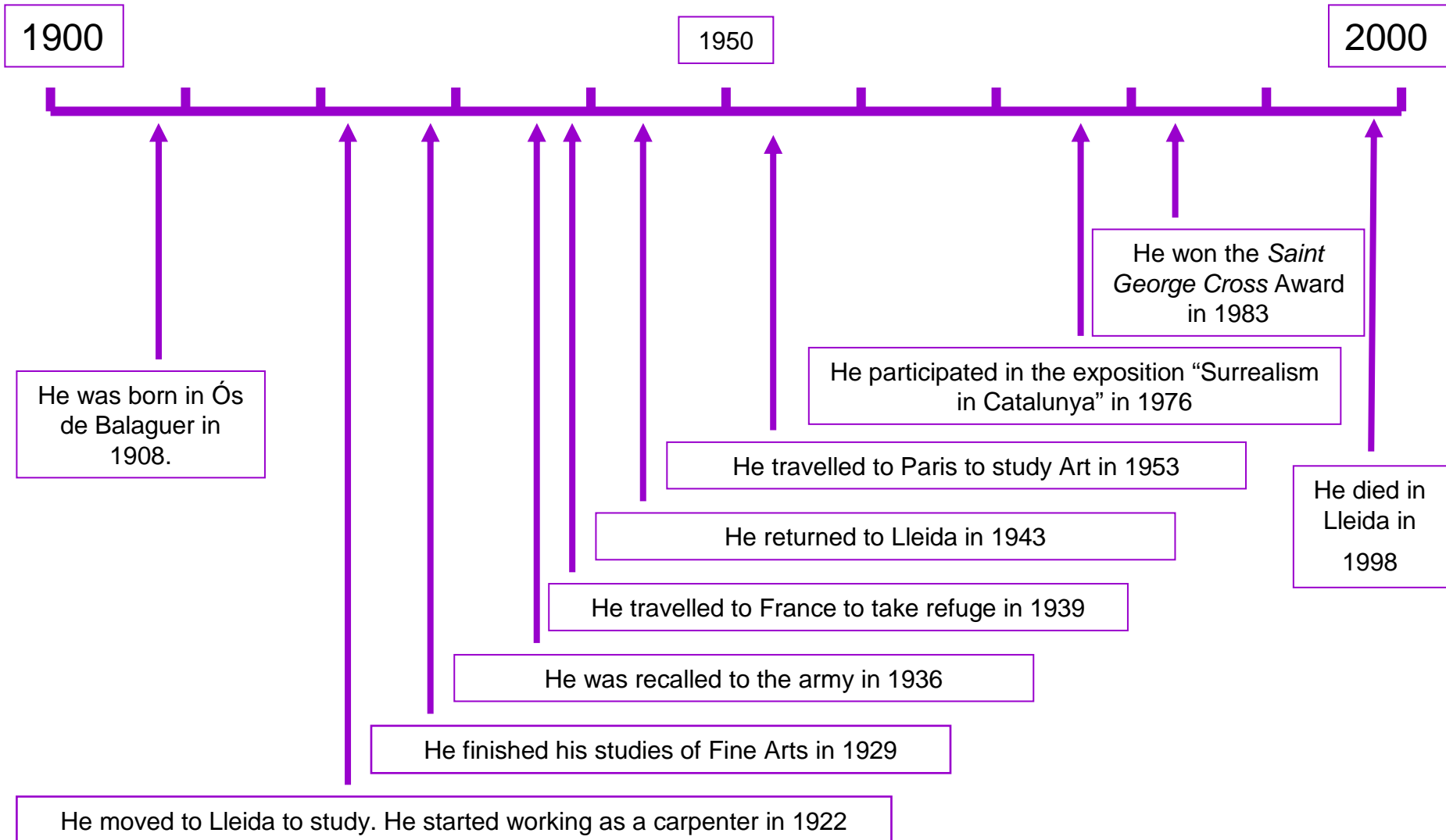


He lived in Lleida



He was a sculptor

Cristòfol's Chronology



His work...

Look at these images:



Figurative art:
represents people,
objects and scenes.

What is similar?

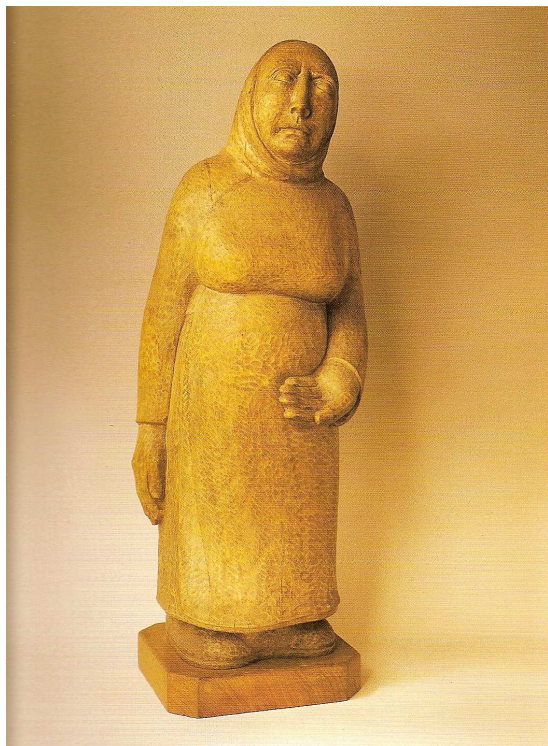
What is different?



Abstract art:
represents feelings,
ideas or concepts but
not imitating or
representing reality.

Figurative art

- During the 30s, Cristòfol created some figurative works of art.



Beggar, 1934

- Are they men or women?
- What kind of material did Cristòfol use?
- What part of their body is bigger than usual?
- Why?



Housewife of a village,
1935

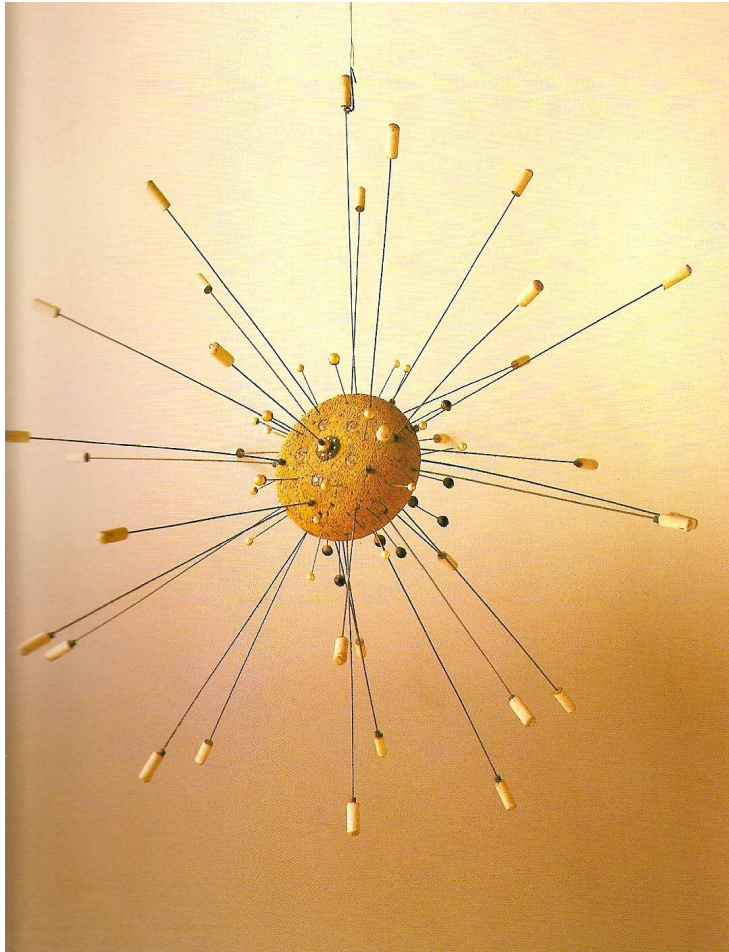
Abstract art



- How can you describe this sculpture?
- What do you think it is or it represents?
- What title have you given to it?

Night of moon (1953)

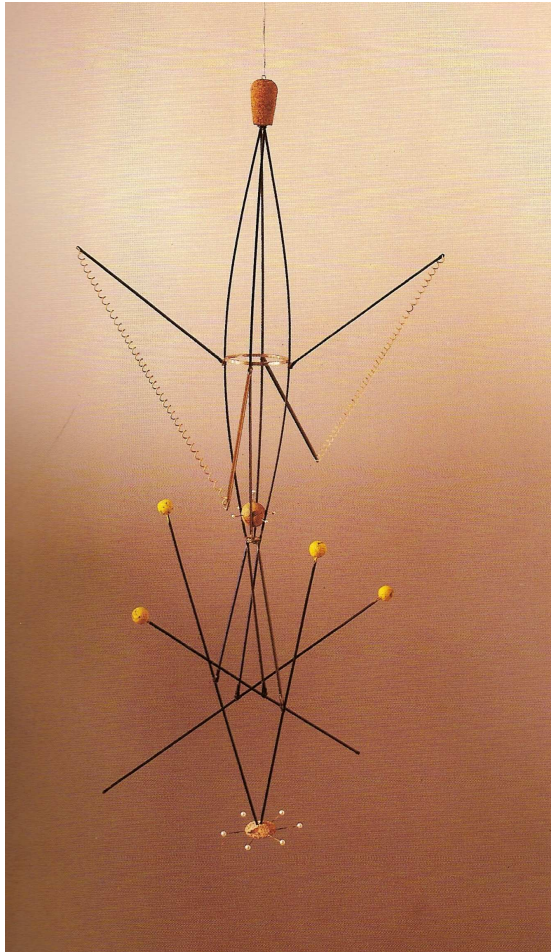
Abstract art



- How can you describe this sculpture?
- What do you think it is or it represents?
- What title have you given to it?

Stellar Harmony (1957)

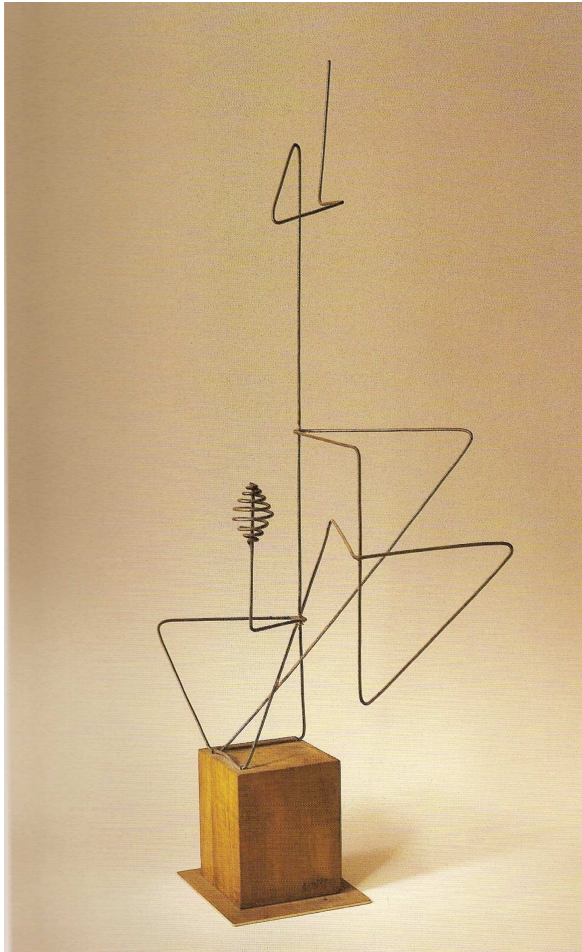
Abstract art



- How can you describe this sculpture?
- What do you think it is or it represents?
- What title have you given to it?

Constant Metamorphose (1957)

Abstract art



- How can you describe this sculpture?
- What do you think it is or it represents?
- What title have you given to it?

Intrigue of Birds (1960)

Abstract art



- How can you describe this sculpture?
- What do you think it is or it represents?
- What title have you given to it?

From Air to Air (1933)

Abstract art

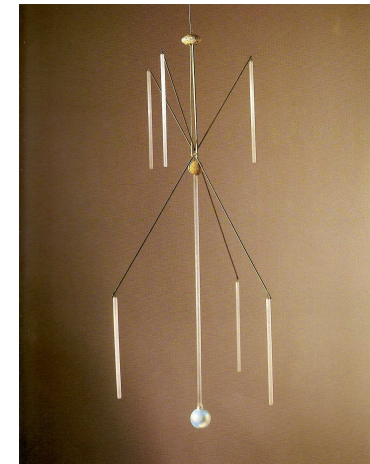
Cristòfol also created a lot of abstract works of art in different moments of his life.



Monument, 1935

- What kind of materials did he use?

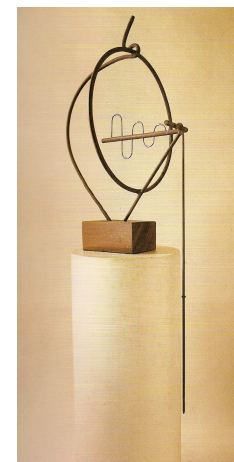
- He used different kind of objects which had been used before, but now they express an idea or feeling.



Mystic Relationship, 1957

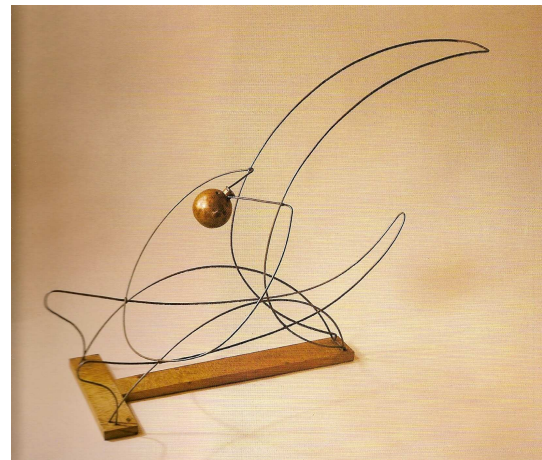
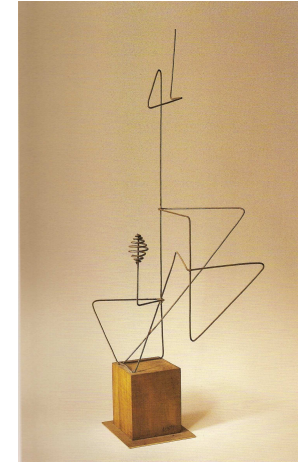
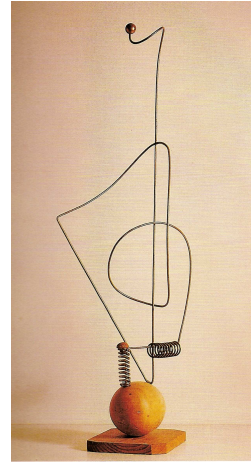


The Astral and Impasive Aureola is Going to Leave, 1936

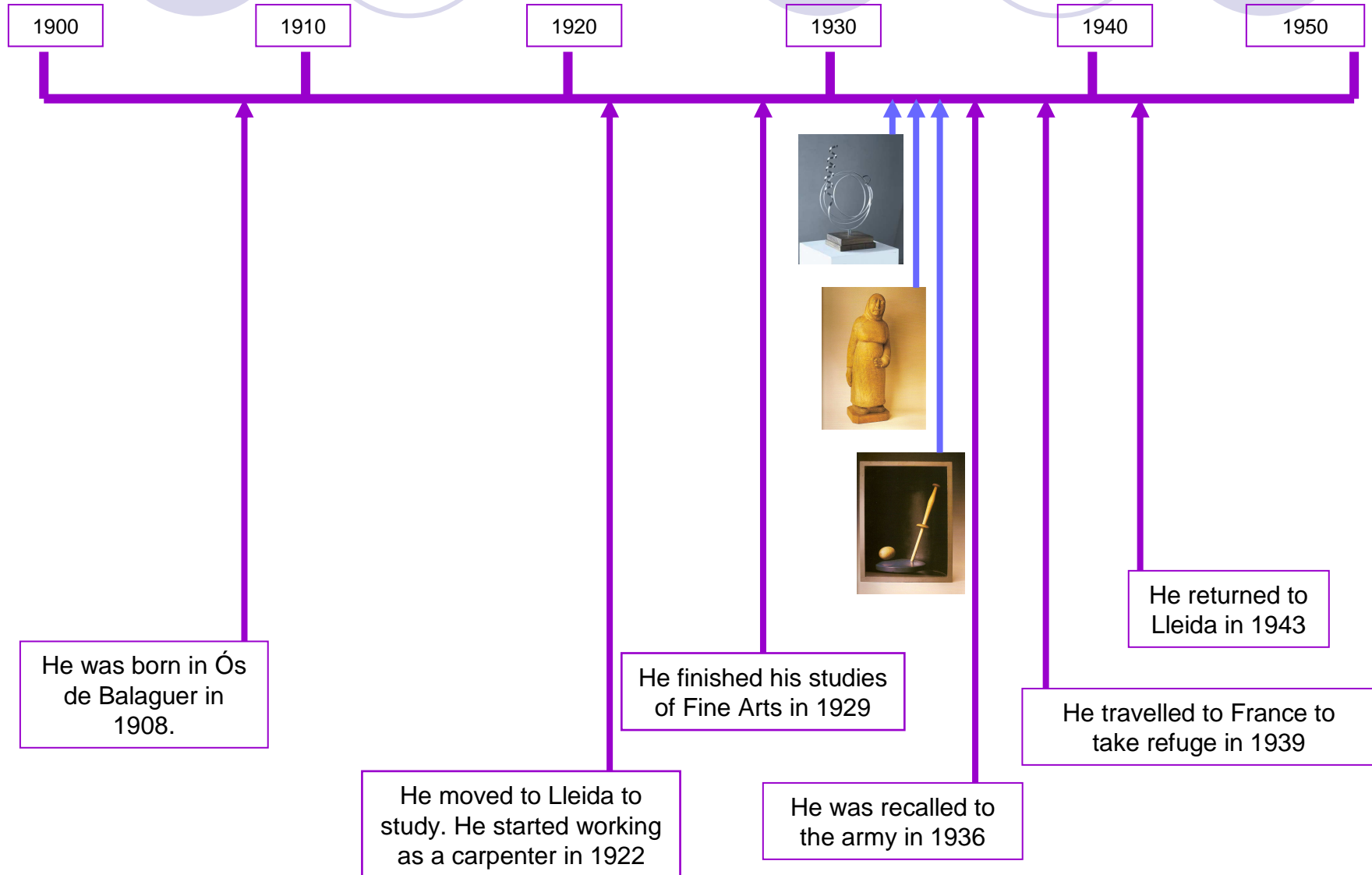


Spatial Sculpture, 1962

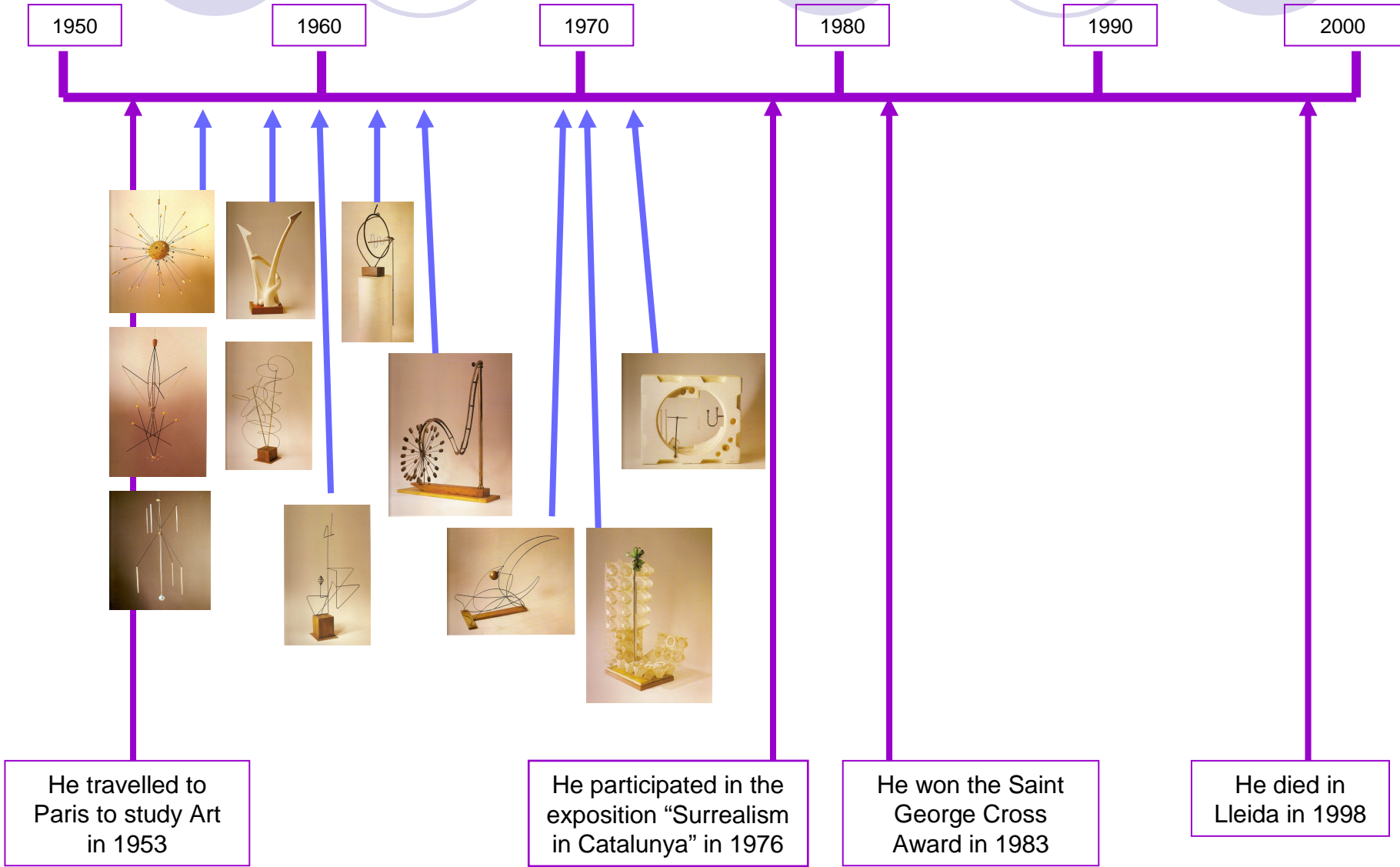
Sculptures with wire...



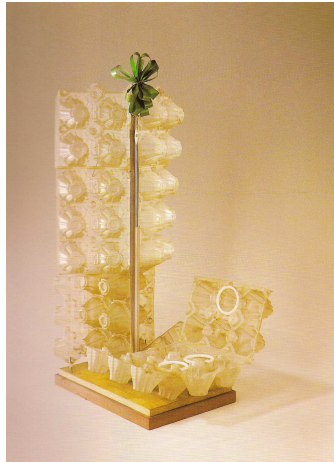
Let's look at the chronology with more detail...



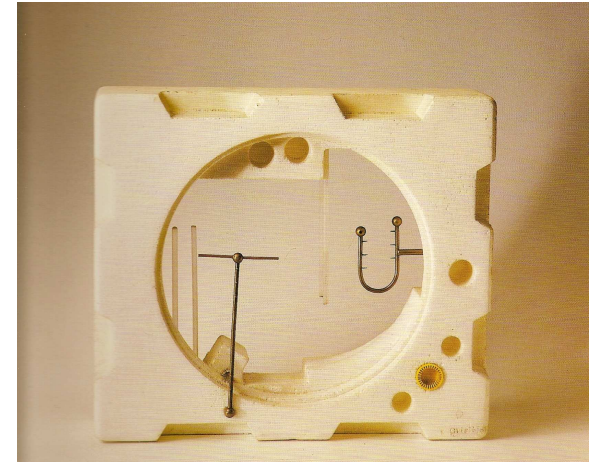
Let's look at the chronology with more detail...



From 1970, Cristòfol started using different materials (also reused).



Competitive Elements (1970)

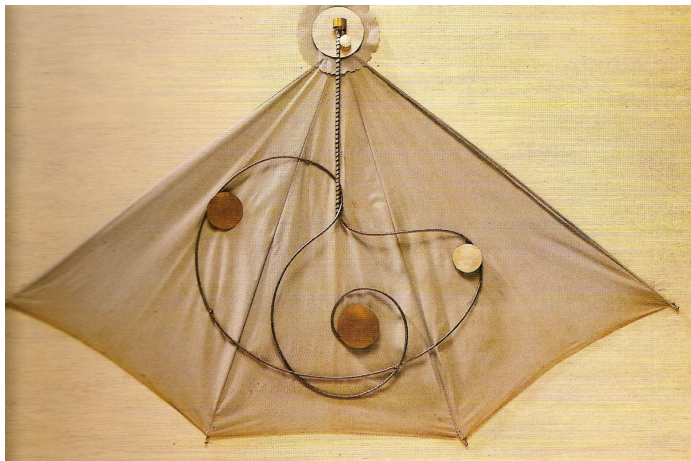


Container of Insomnia (1972)

What materials can you see?

- Egg boxes
- Plastic rings
- A piece of polystyrene
- An umbrella
- A net
- A plastic ball
- A palette

(...)



After the dew (1974)



Consumption II (1975)