

Start

It is the natural home of a group of plants and animals.



Tundra

This habitat stretches across a large portion of Canada, Europe and Asia. It is the largest habitat in the world. Winters are cold. Summers are warm. Lots of conifers grow here.



Taiga

This habitat covers three quarters of the Earth's surface. It is very complex. It is home to the smallest plankton and the largest creature on earth, the blue whale.



Wetlands

It is a natural flow of water that continues in a long line across land to the sea/ocean.



Rivers

It is the planet where humans, animals and plants live together.



Streams

71% of the Earth's surface is covered in it.



Ponds

It is a habitat of extremes: extreme heat and extreme dryness; sudden flash floods and cold nights. It is a large area of land that has very little water and very few plants growing on it. Many of them are covered by sand.



Lakes

It is a habitat that has four seasons of spring, summer, autumn and winter. The leaves on the trees do change colour in autumn, fall off in the winter, and grow back again in the spring. This helps trees in this habitat survive winter.



Shorelines

It is the group of living things that are not plants or humans.



Temperate ocean

It is the group of habitats whose surface is not the sea.



Tropical oceans

29% of the Earth's surface is covered in it.



Habitat

It is where oceans and seas meet land.



Animals

It is a small narrow river.



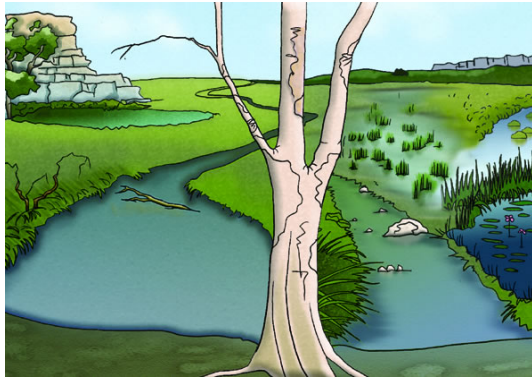
Plants

These Fresh water habitats are found all over the world in lowland areas or along rivers, lakes, and streams. Some of these habitats are temporary and seasonal. They occur for a few weeks at a time and then disappear until they are refilled with water. Others are always under water.



Marine Habitat

These habitats are big open spaces. There are not many bushes in these habitats. Trees are found only by rivers and streams. This habitat seems like an endless ocean of grass.



Freshwater habitat

Coral reefs are an example of this habitat. They are found on warm water. The reef is made up of thousands of corals.



Land Habitat

It is a small area of fresh water, especially one that is artificial.



Rainforest

The group of habitats that have water that is not salty. For example: lakes and rivers.



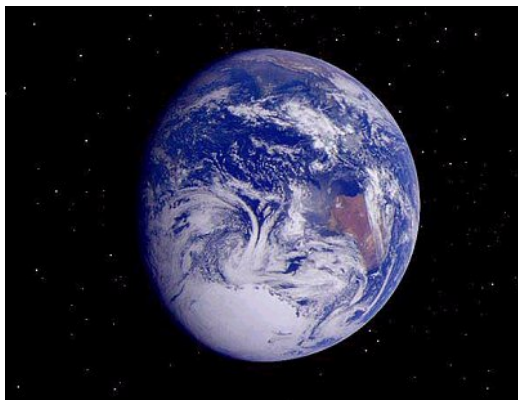
Water

It is a habitat where the vegetation is dense, tall and very green. Rainfall falls regularly throughout the year.



Soil

It is a large area of fresh water that is surrounded by land.



The Earth

Finish