

LESSON 6. HENRY MOORE (part 2)

Activity 1: Henry Moore's style

The aim of this activity is to learn about Moore's style. Children look at the sculptures and think which of them are made by Henry Moore (using the information they already have about the artist). Students check with their partners once they have finished. Sculptures A and D are made by Moore.

A) *Draped Reclining Figure*, 1952-53. By Henry Moore. In Washington D.C.

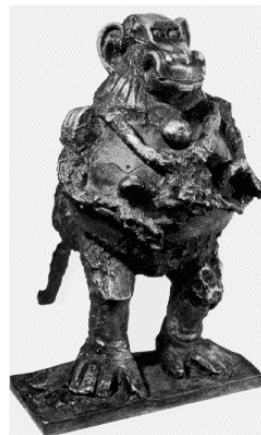
B) *Baboon with Young*, 1951. By Pablo Picasso.

C) *Alice in Wonderland*, 1977-84. By Salvador Dalí.

D) *Large-Arch*. By Henry Moore. In Columbus, Indiana.



A



B



C



D