

CLASSICAL SCULPTURE

Lesson 1: A first look

IES VILATZARA
Javier Muro

1. GEOGRAPHICAL FRAME



MEDITERRANEAN SEA, BLACK SEA, AEGEAN SEA, ADRIATIC SEA, IONIAN SEA, TYRRHENIAN SEA

ITALY, GREECE, ASIA MINOR, PELOPONNESUS

BYZANTION, ATHENS, OLYMPIA, SPARTA, ROME

ISLANDS: RHODES, CRETE, SICILY, CORSICA, SARDINIA, CYPRUS, CHIOS, LESBOS

OLYMPUS MOUNT, TIBER RIVER

The Mediterranean Basin



http://www.lib.utexas.edu/maps/europe/mediterranean_rel82.jpg



http://en.wikipedia.org/wiki/Image:Peloponnese_modis.jpg



www.answers.com/topic/aegean-sea

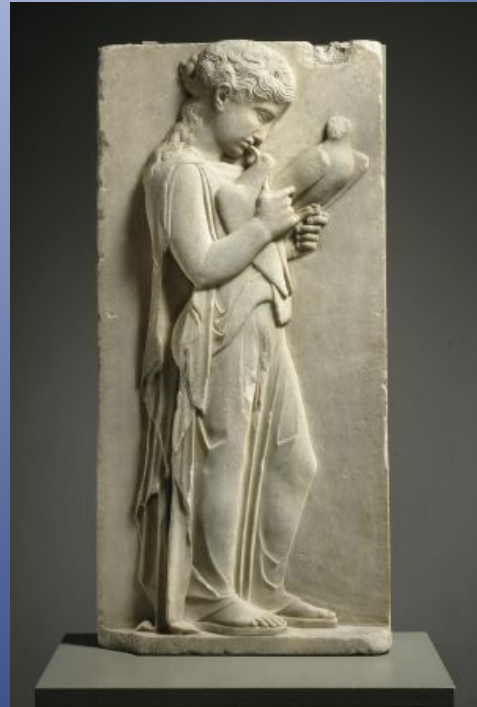


2. CHRONOLOGICAL FRAME

CLASSICAL SCULPTURE



Kleobis and Biton. Kouroi. 580 B.C.

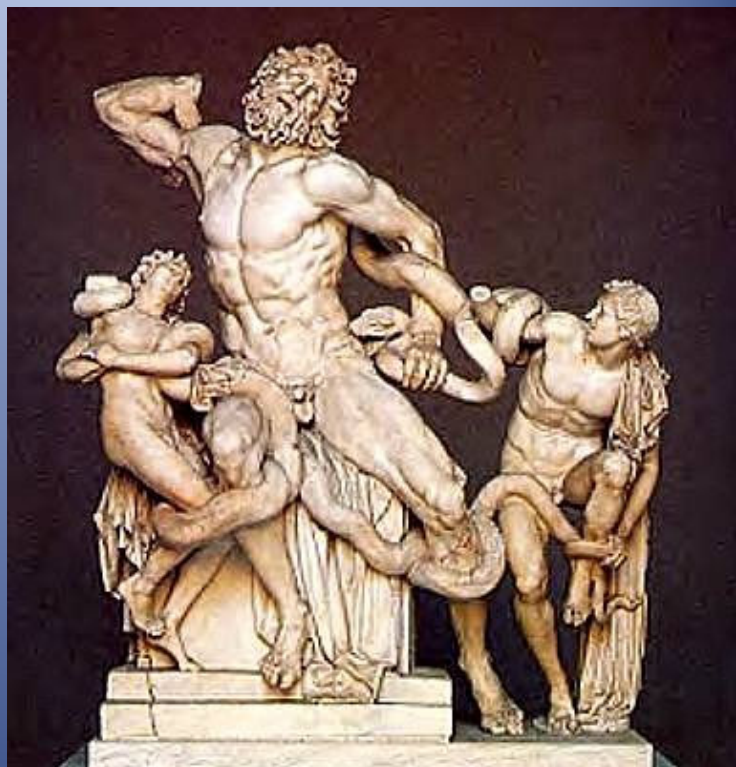


Grave stele of a little girl with doves ca.450 B.C.



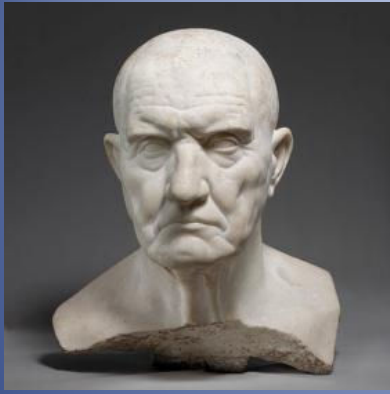
Polykleitos. Doryphoros.

ca.450-440 B.C.



Laocoon and his sons.

Original from ca.200 B.C.



Portrait bust of a man,
1st century B.C.



Augustus of Prima Porta. Early 1st century AD (marble)
after a bronze of the 1st century BC



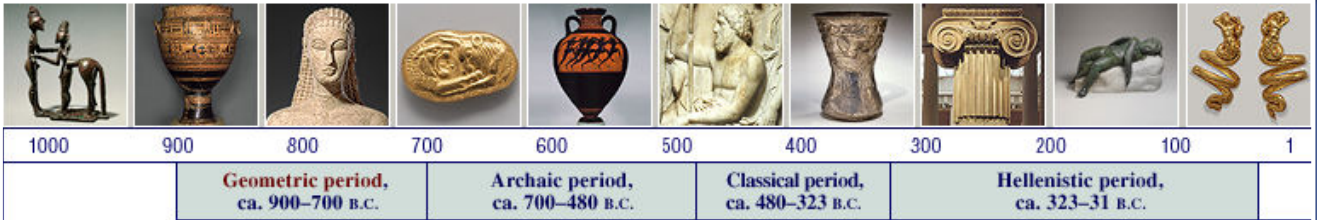
Ara Pacis Augustae. 9 B.C. Rome



Trajan's column. 113 A.D. Rome

Ancient Greece, 1000 B.C.–1 A.D.

TIMELINES



Italian Peninsula, 1000 B.C.–1 A.D.



Italian Peninsula, 1–500 A.D.



ANCIENT GREECE	PERIOD	ARCHAIC	CLASSICAL	HELLENISTIC
	CHRONOLOGY			
	ARTWORKS			
ANCIENT ROME	PERIOD	MONARCHY / "SEVEN KINGS"	REPUBLIC	EMPIRE
	CHRONOLOGY			
	ARTWORKS			

ANCIENT GREECE	PERIOD	ARCHAIC	CLASSICAL	HELLENISTIC
	CHRONOLOGY	700 – 480 B.C.	480 – 323 B.C.	323 – 31 B.C.
	ARTWORKS	• Kleobis and Biton	• Grave stele • Doryphoros	• Laocoon
ANCIENT ROME	PERIOD	MONARCHY / “SEVEN KINGS”	REPUBLIC	EMPIRE
	CHRONOLOGY	752 – 510 B.C.	509 – 27 B.C.	27 B.C. – 393 A.D.
	ARTWORKS		• Portrait bust	• Tarantine relief • Augustus of Primaporta • Ara Pacis Augustae

3. And now read the next definitions and CLASSIFY the previous artworks in this grid:

SCULPTURE: A three dimensional work of art that can be made in a huge variety of materials and can be described as assemblage, statue in the round and relief.

RELIEF: A two dimensional work in which carved figures project from a background plane.

STATUE IN THE ROUND: An in-the-round statue is three dimensional with all parts of it fully carved or modelled. It is necessary to walk around the figure to fully appreciate its form.

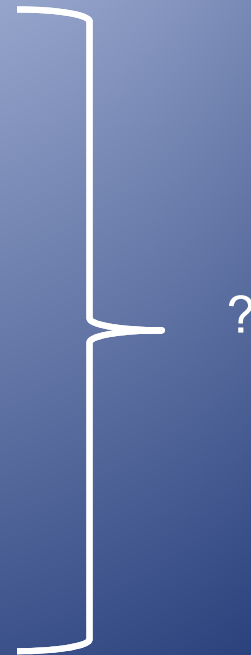
	SCULPTURE
<p>STATUE IN THE ROUND</p>	<ul style="list-style-type: none"> • • • • •
<p>RELIEF</p>	<ul style="list-style-type: none"> • • •

	SCULPTURE
<p>STATUE IN THE ROUND</p>	<ul style="list-style-type: none"> • Kleobis and Biton • Doryphoros • Laocoon • Portrait bust • Augustus of Prima porta
<p>RELIEF</p>	<ul style="list-style-type: none"> • Grave stele of a little girl with doves • Tarantine grave relief • Ara Pacis Augustae

4. ASKING AND ANSWERING QUESTIONS (5 Ws)

Using the following 5 Ws prepare two questions for asking classmates:

- WHAT
- WHO
- WHEN
- WHERE
- WHY



5. CATALOGUING

Use the next pattern for writing the cataloguing of 4 of the previous artworks.

(Artwork) (is/are) (a/an) (statue in the round/relief) carved by (sculptor/unknown) in the (year/century), so is a good example of (style and period). *(Individually and plenary)*

•
•
•
•

6. Which of the sentences below describe a common feature to all the classical sculptures that we have seen?

- A) Expressivity and suffering is strong.
- B) The body is represented in a naturalistic (real) way.
- C) The movement is reinforced by the twist of bodies.
- D) The human body has a main role.
- E) Religion is the main theme represented.

Your answer:

We agree that _____
_____.

6. Which of the sentences below describe a common feature to all the classical sculptures that we have seen?

- A) Expressivity and suffering is strong.
- B) The body is represented in a naturalistic (real) way.
- C) The movement is reinforced by the twist of bodies.
- D) The human body has a main role.**
- E) Religion is the main theme represented.

Your answer:

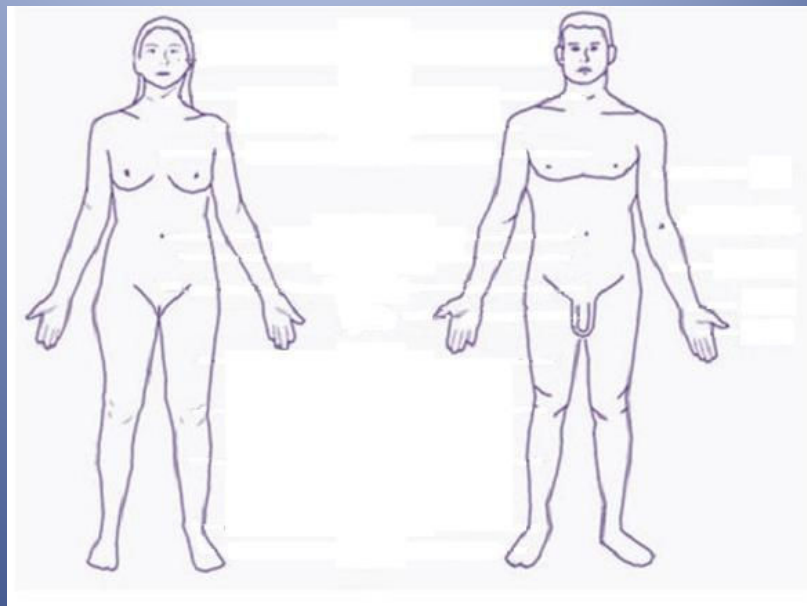
We agree that _____
_____.

‘Man is the measure of all things: of things which are, that they are, and of things which are not, that they are not’.

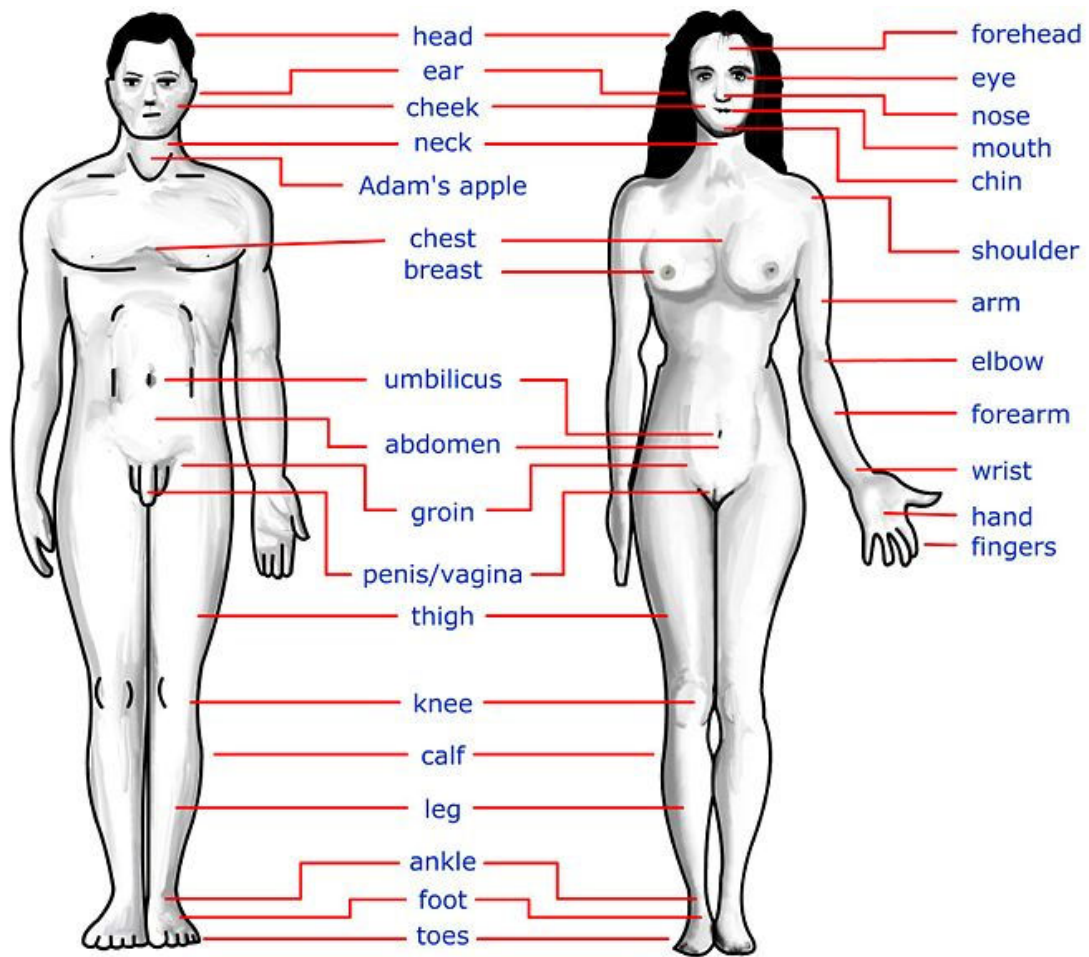
Protagoras (ca.490-420 B.C.)

7.1. THE HUMAN BODY

7.1. Write the parts of the body indicated below:



HEAD			TRUNK		LIMBS / EXTREMITIES			
FACE	NECK	EYE	SHOULDER	CHEST	ARM		LEG	
NOSE	EAR	BEARD	UMBILICAL	HIP	HAND	FINGER	KNEE	FOOT
HAIR	MOUTH	FOREHEAD	GROIN		ELBOW		ANKLE	TOES



http://upload.wikimedia.org/wikipedia/commons/thumb/5/57/Human_body_features.jpg/715px-Human_body_features.jpg

7.2. Rewrite the following four sentences related with the classical sculptures that we have seen:

- hands/has/in/The/girl/her/dove/young/a:
- suffering/of/The/Laocoon/face/represented/his/in/is:
- August of Primaporta /right/arm/raised/has/his:
- Doryphoros/his/leg/has/bent/left:

7.2. Rewrite the following four sentences related with the classical sculptures that we have seen:

- The young girl has a dove in her hands
- The suffering of Laocoön is represented in his face
- Augustus of Prima porta has got up his right arm
- Doryphoros has bent his left leg

8. Write in the diagram below the name of these artworks according to their period /style:



Altar of Zeus at Pergamum
164-156 B.C.



Tarantine grave relief, ca. 325–300 B.C.



Anavissos Kouros 540-515 B.C.



The sacred robe of Athena held up by cult officials, and Athena and Hephaistos

The Acropolis, Athens, ca. 438-432 B.C.

[Blank box]

Archaic period

[Blank box]

[Blank box]



[Blank box]

[Blank box]

Republic

[Blank box]

GREEK ART

Archaic period

Kleobis and Biton
Anavissos Kouros

Classical period

Doryphoros
Athena and Hephaistos

Hellenistic period

Altar Zeus Pergamum
Laocoon and his sons



ROMAN ART

Monarchy

Republic

Tarantine grave relief

Empire

Augustus of Prima Porta