



- ➡ IES Ramon Casas i Carbó is a school of approximately 600 students
- ➡ The great majority of students come from three Primary Schools
- ➡ Teaching staff - 67 teachers
- ➡ It is located in Palau-solità i Plegamans

Location

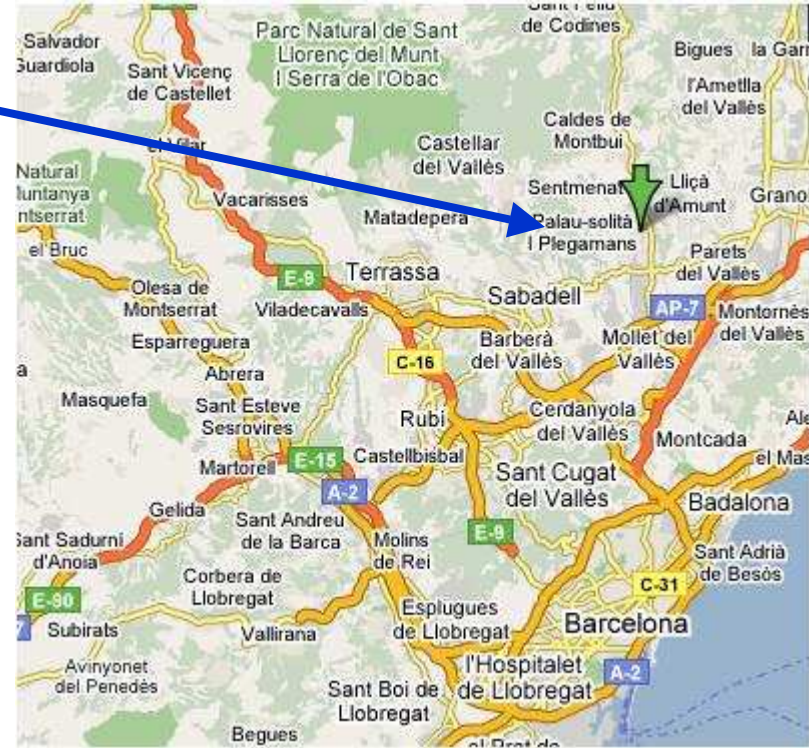
Palau-solità i Plegamans is 25 km from Barcelona

Currently the population is about 13,000 inhabitants

The population is basically from Catalonia and from other parts of Spain

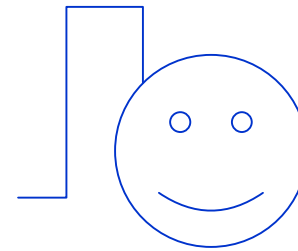
Palau doesn't have a lot immigrants from other countries

Palau has lots of industries



Brief history of the project

- Starting in 2003
- We set up the project “Animal World”, within the framework of the Orator Program (2003-2005)
- In 2005 we started a new project: “Let’s learn Science”, within the framework of the “Pla experimental de llengües estrangeres” (2005-2008)
- There is cooperation between the English teachers and the Science teachers
- Projects aimed at the whole school
- The results were encouraging
- Parents, students and teachers enthusiastic



Student's Books



Animal World (2003-2005)

- A group of teachers from the science department, in collaboration with the foreign language department
- Second term of the first year (ESO)
- All the students of the first year (ESO) study science through English (2004-2005)



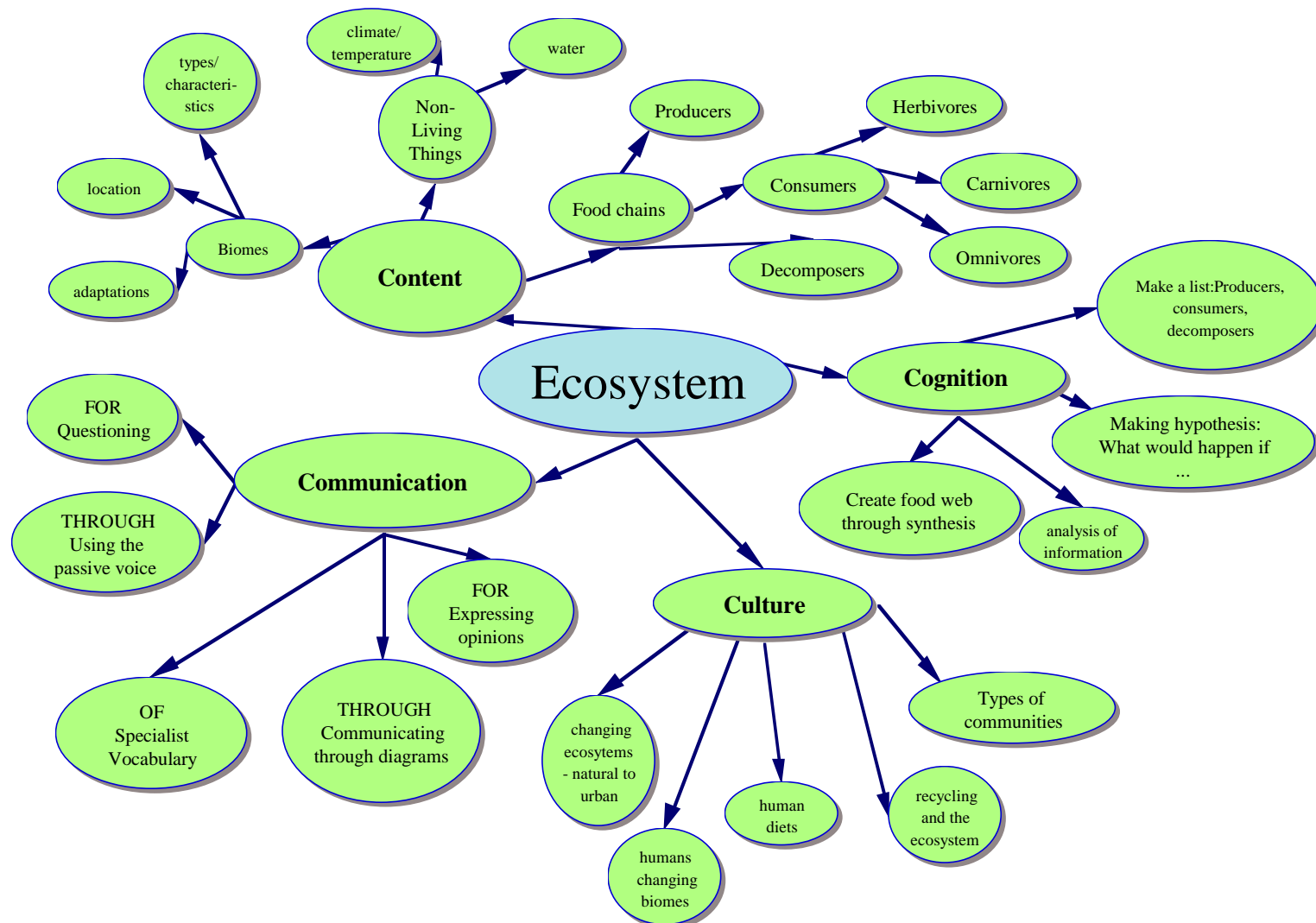
Spectacular Science

- Optional subject in the second year (ESO) 2005-2006
- Spectacular Science is largely experiments and scientific method

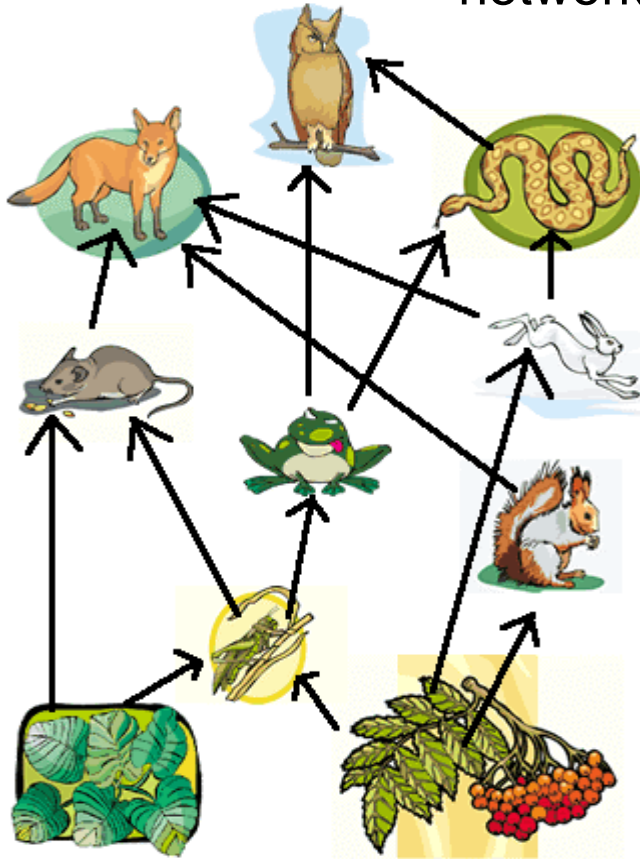


Staying alive

- Compulsory subject
- First term of the third year (ESO)



Food Web: extends the food chain concept from a simple linear pathway to a complex network of interactions



Activity 1.- Identify the:

- Producers:
- Primary consumers:
- Secondary Consumers:
- Herbivores:
- Carnivores:
- Omnivores
- What elements are missing from this food web?

➡ The grasshopper is eaten by the toad

Food chain!



Questions



What would happen to the population of toads if there were no plants for the grasshopper to eat?

If the population of	toads snakes squirrels rabbits grasshopper foxes	decreases increases
	Then	
the population of	toads snakes squirrels rabbits grasshopper foxes	will grow will decrease / diminish

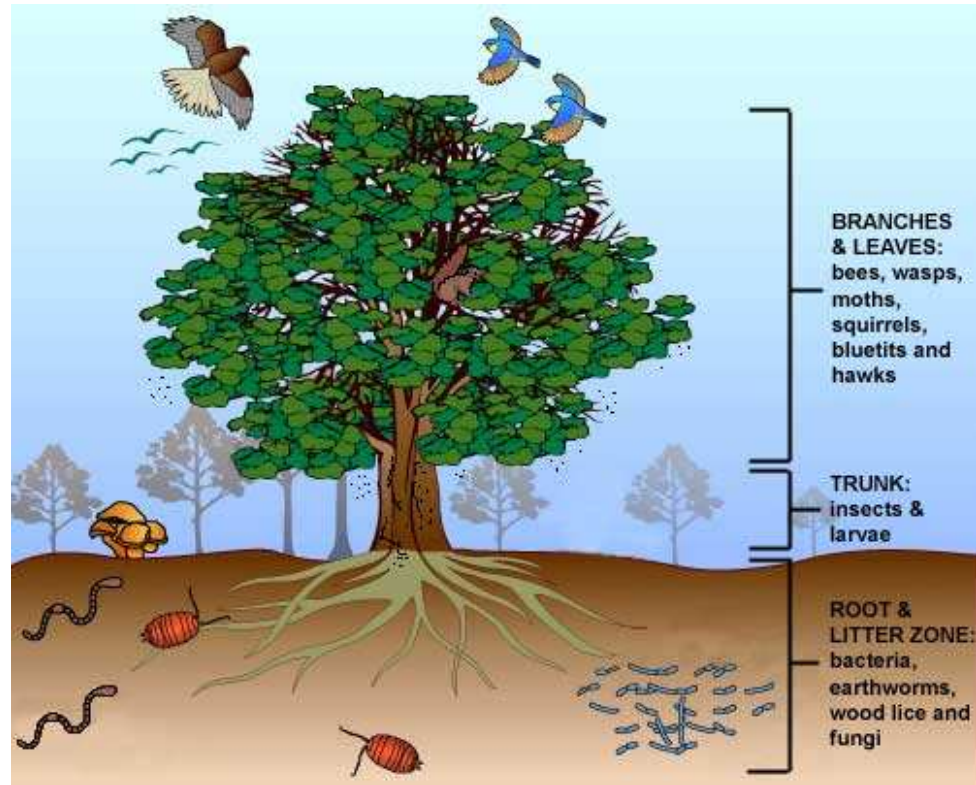
Conclusion

Any change in a population of the food web affects all the links in the food web



Ecosystem

- An ecosystem is an area where living (**biotic**) and nonliving (**abiotic**) things interact



Activity 1

Find three biotic factors in this word snake

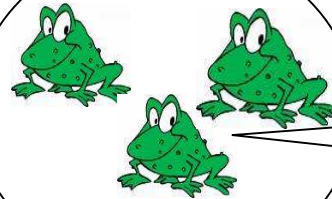
hdescomposerstaproducersigconsumersak

Tick abiotic or biotic into the boxes.

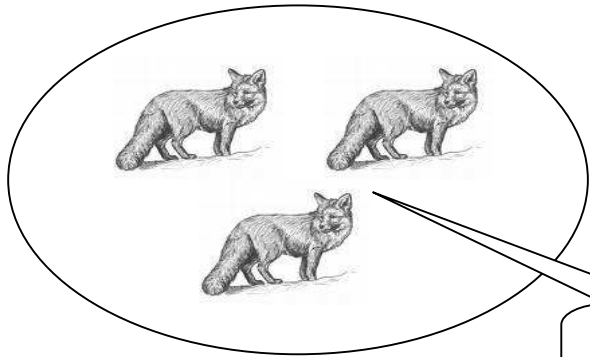
	Abiotic	Biotic
Descomposers		
Temperature		
Soil		
Producers		
Air		
Predators		
Water		
Consumers		

Learn new words: organism, population and community

I am an
organism



we are a
population

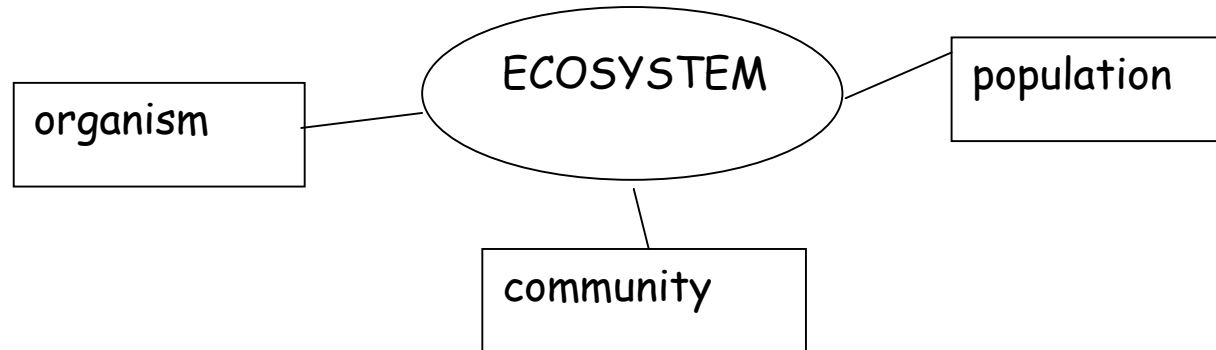


we are a
population

**All together
community**

Activity 2

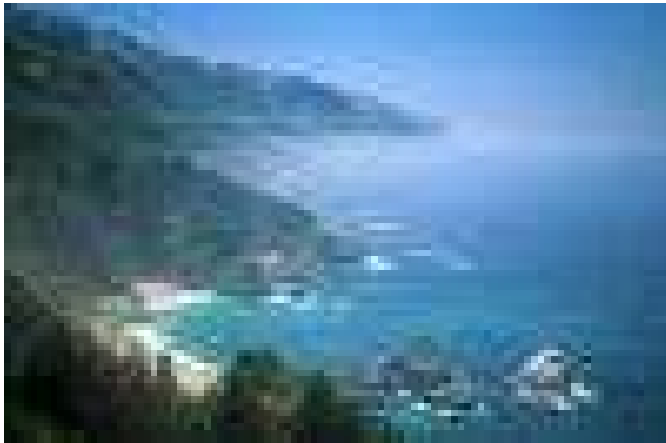
Here there are words related to ecosystems. Use them in sentences. First talk, discuss and then make a report



- A population is a group _____
- The community _____
- An organism _____

Activity 3

Look at these pictures and make conclusions



Natural Ecosystem



Urban Ecosystem

What is the difference between Natural Ecosystem and Urban Ecosystem?

In the first picture In the second picture	there are there aren't	Skyscrapers Buildings Plants People ships
---	---------------------------	---



?

Any questions?