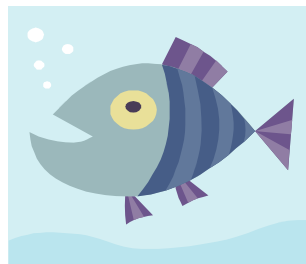


LIFE UNDER THE SEA

(Student's Worksheets)

Salvador Rodríguez Almendros



January - March 2009



THINGS I CAN FIND UNDER THE SEA

- Draw only one of the things you found under the sea when you closed your eyes.

A large, empty rectangular box with a double black border, intended for a drawing.

I would like to learn more about _____.



DOLPHIN FILE

- Basic information:

- **FOOD**

Dolphins eat many types of fish, squid, shrimps and eels.

- **BABIES**

Dolphins carry their young for 10 to 12 months and give birth to 1 calf.

- **ENEMIES**

Large sharks and killer whales are the main enemies of dolphins.

- Other facts:

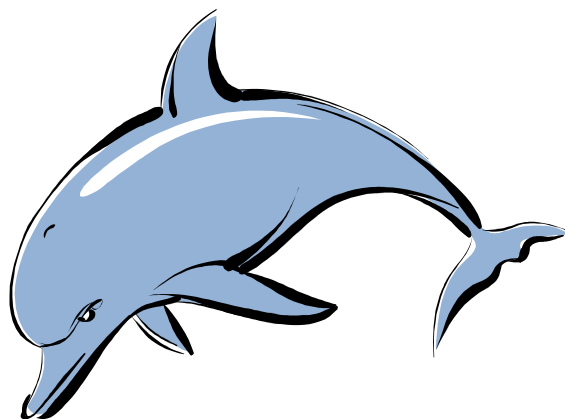
- **Where they live:** sunlit zone of the sea

- **Length:** up to 9 m

- **Swimming speed:** up to 40 km/h

- **Height of jumping:** up to 6 m

- **Life span:** up to 50 years





OCTOPUS FILE

- Basic information:

- **FOOD**

Octopus eat crabs, many kinds of fish and shellfish.

- **BABIES**

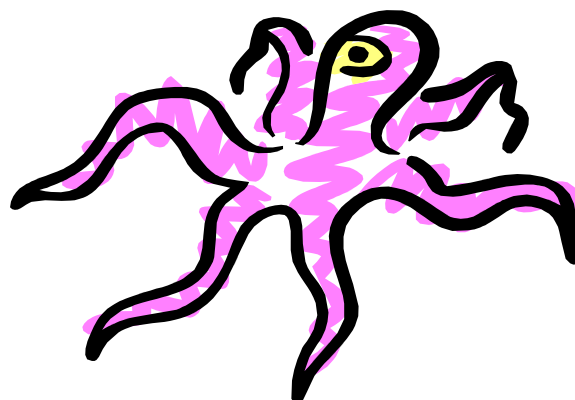
The female lays thousands of eggs and dies soon after her babies have hatched.

- **ENEMIES**

Sharks, dolphins and eels are the main enemies of octopus.

- Other facts:

- **Where they live:** sunlit, twilight and midnight zones of the sea
- **Length:** up to 3 m
- **Weight:** up to 25 kg
- **Number of hearts:** 3
- **Life span:** up to 5 years





SHARK FILE

- Basic information:

- **FOOD**

All sharks eat fish and some eat turtles, sea lions, seals and dolphins.

- **BABIES**

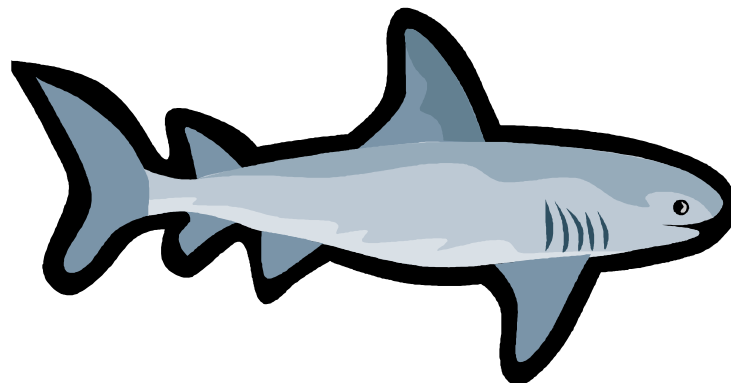
Some types of sharks have babies, others lay eggs.

- **ENEMIES**

Small sharks can be eaten by lots of animals, including fish and dolphins.

- Other facts:

- **Where they live:** mostly sunlit and twilight zones of the sea
- **Length:** up to 15 m
- **Swimming speed:** up to 35 km/h
- **Number of teeth:** up to 300
- **Life span:** believed to be up to 100 years





ANGELFISH FILE

- Basic information:

- **FOOD**

Angelfish eat corals, sponges, tiny plants and fish from the sea.

- **BABIES**

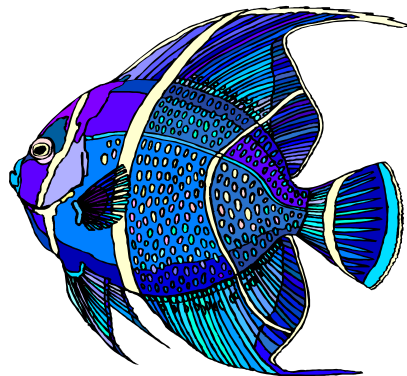
The female lays lots of eggs that float in the sea and eventually become little fish.

- **ENEMIES**

Sharks, crawfish and some types of fish are the main enemies.

- Other facts:

- **Where they live:** sunlit zone of the sea
- **Length:** up to 30 cm
- **Colour range:** yellow, black, blue, white and silver.
- **Number of species:** about 74
- **Life span:** up to 12 years





JELLYFISH FILE

- Basic information:

- **FOOD**

Jellyfish eat tiny animals, including other jellyfish and fish.

- **BABIES**

Jellyfish eggs turn into tiny polyps. These make buds that turn into jellyfish.

- **ENEMIES**

Albatrosses, sunfish and sea turtles all eat jellyfish.

- Other facts:






- **Where they live:** sunlit and twilight zones of the sea
- **Length of tentacles:** up to 36.5 m
- **Width:** up to 2.3 m.
- **Number of species:** about 200
- **Life span:** about 12 months





JIGSAW CHART

- Complete the chart with the information from the files:

Are you an expert on ...?	<u>FOOD</u>	<u>BABIES</u>	<u>ENEMIES</u>	<u>OTHER FACTS</u>
 SHARKS				
 ANGELFISH				
 OCTOPUS				
 DOLPHINS				
 JELLYFISH				

* Examples of possible sentences to use:

- _____ eat _____.
- _____ are the main enemies of _____.
- _____ have babies / _____ lay eggs.
- _____ can be eaten by _____.
- They live in _____. They are up to _____ m/cm long. They swim up to _____ km/h.
- They weigh up to _____ kg. They jump up to _____ high. They live up to _____ years/months.
- They have _____ hearts/teeth. They are coloured _____. There are _____ species.



10 FACTS ON SEA FLORA & FAUNA

- Dolphins eat many types of fish, squid, shrimps and eels.
- Sharks, dolphins and eels are the main enemies of octopus.
- Some types of sharks have babies, others lay eggs.
- There are about 200 species of jellyfish.
- Seaweed and phytoplankton form part of the sea flora.
- Sharks are up to 15 metres long and swim up to 35 km/h.
- Octopuses weigh up to 25 kg.
- Dolphins live in the sunlit zone of the sea.
- Angelfish are coloured yellow, black, blue, white and silver.
- Phytoplankton are very small plants that live near the surface.



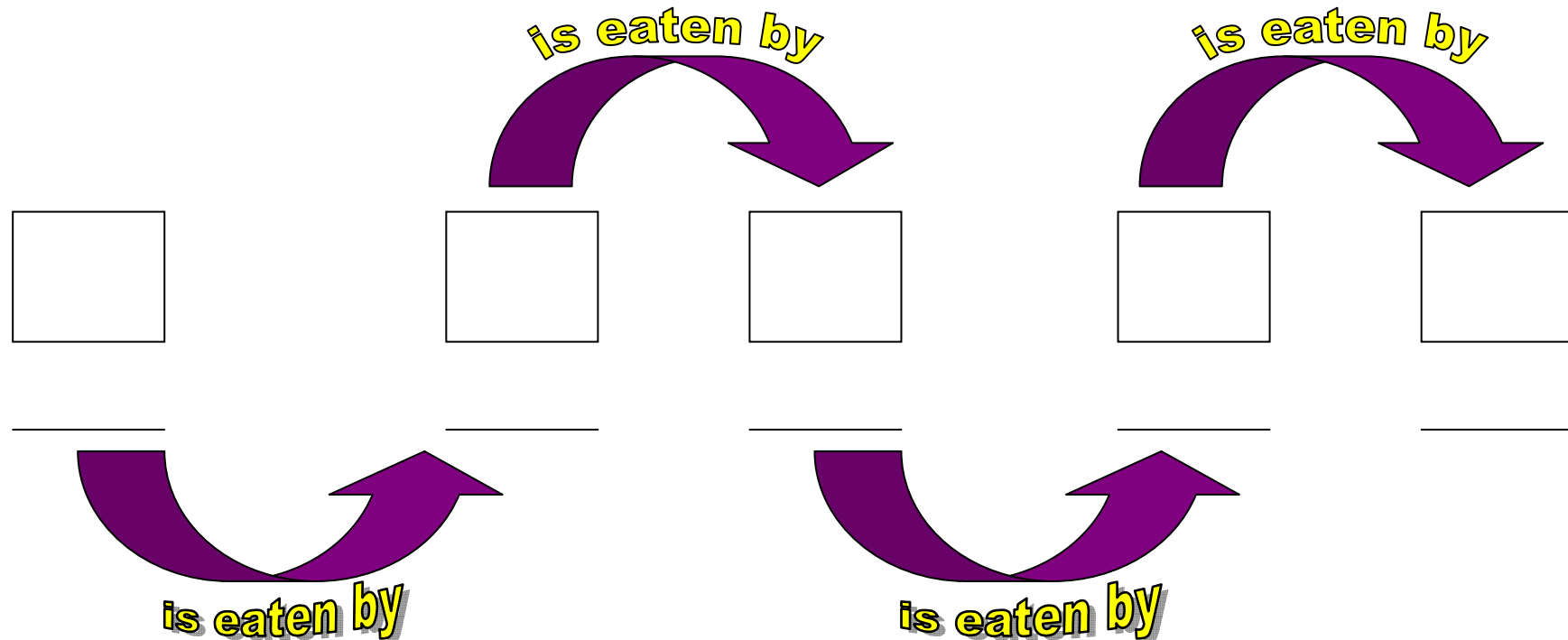
10 FACTS ON SEA FLORA & FAUNA

- _____ eat many types of fish, squid, shrimps and eels.
- Sharks, dolphins and eels are the main _____ of octopus.
- Some types of _____ have babies, others lay eggs.
- There are about 200 species of _____.
- Seaweed and phytoplankton form part of the sea _____.
- Sharks are up to ____ metres long and swim up to 35 km/h.
- _____ weigh up to 25 kg.
- Dolphins live in the _____ zone of the sea.
- _____ are coloured yellow, black, blue, white and silver.
- Phytoplankton are very small _____ that live near the surface.



MARINE FOOD CHAINS

- With the help of a partner, complete this MARINE FOOD CHAIN (only words and pictures):

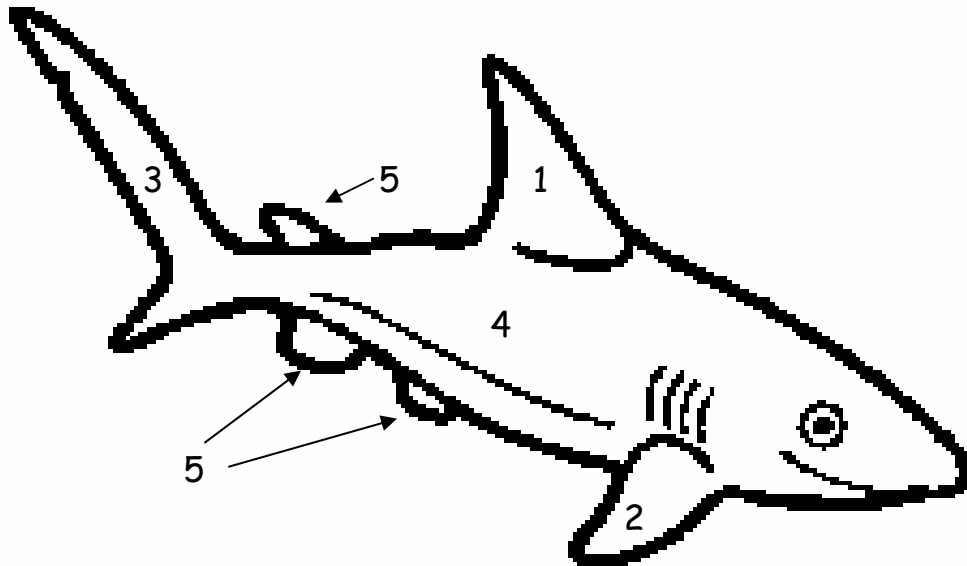


- Now explain in your own words what is happening:



THE COLOURFUL FISH

- Read the instructions and colour the fish:



INSTRUCTIONS

If you like eating fish, colour number 1 red.

If you don't like eating fish, colour number 1 orange.

If you like going fishing, colour number 2 yellow.

If you don't like going fishing, colour number 2 green.

If you prefer fish from rivers, colour number 3 purple.

If you prefer fish from the sea, colour number 3 blue.

If your favourite fish is tuna, colour number 4 grey.

If your favourite fish isn't tuna, colour number 4 black.

If you have pet fish at home, colour number 5 brown.

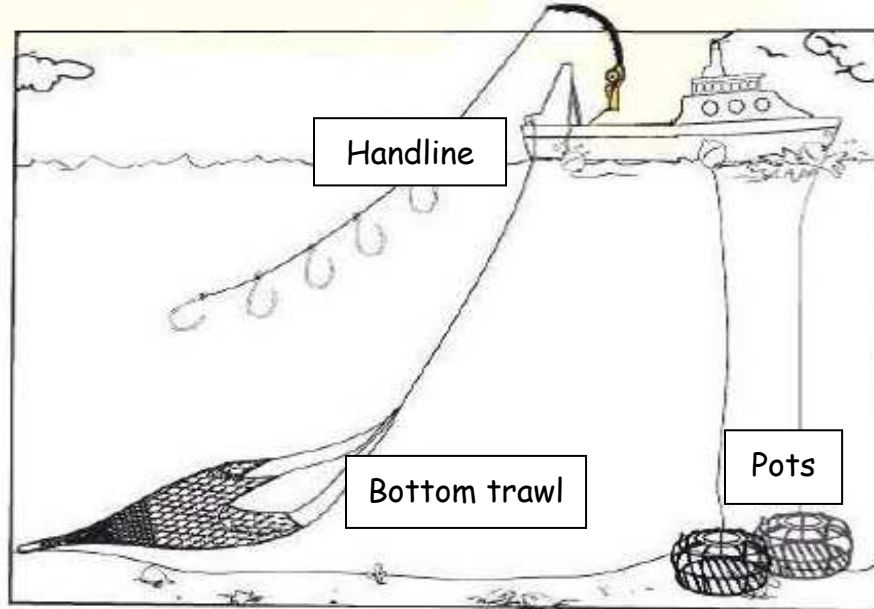
If you don't have a pet fish at home, colour number 5 red.

What kind of fish is the one you coloured? It's a _____.

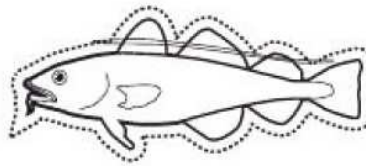


LET'S GO FISHING

- Look at the picture, read the bubbles and complete:



Hello, I'm a cod.
I swim near the
bottom of the
sea.



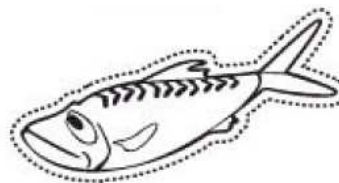
Fishing method used: _____

Hello, I'm a
lobster. I walk
along on the
seabed.



Fishing method used: _____

Hello, I'm a
mackerel. I live
near the top of
the sea.

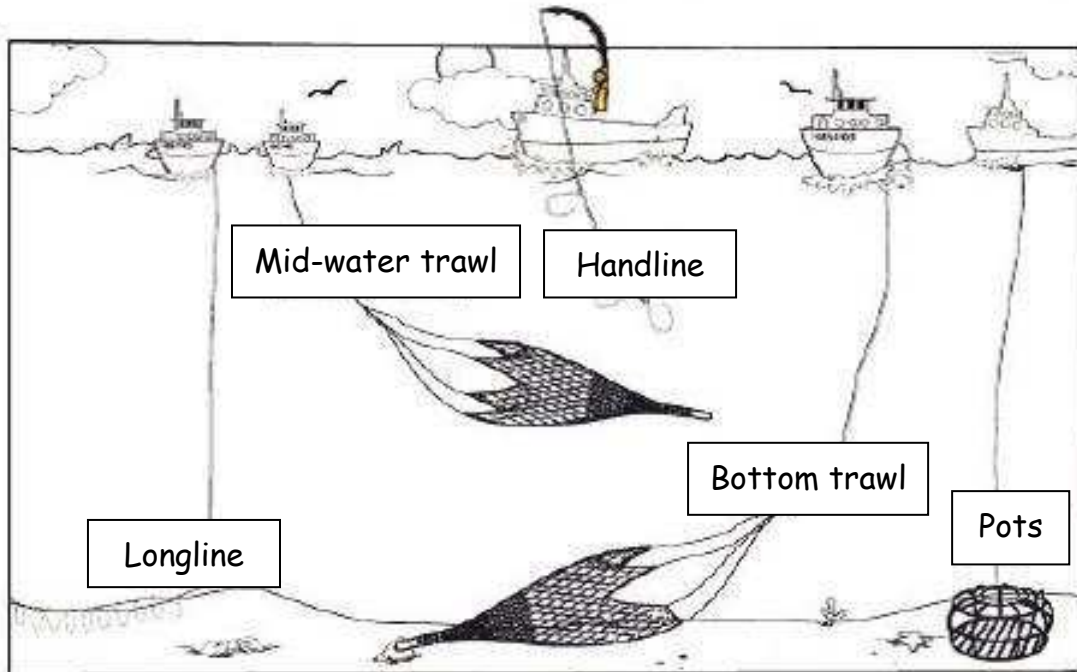


Fishing method used: _____



FISHING METHODS

- Look at the picture, read the descriptions and complete the table with the name of a fishing method:



METHOD	DESCRIPTION	SPECIES
	A boat pulls a net through the water below the surface but not along the bottom.	
	A boat drops down a cage with bait and marks it with a buoy.	
	A boat drops a very long fishing line all the way down.	
	A boat pulls a net through the water. It can roll along or stay just above the seabed.	
	A boat drops a line with a lot of hooks but they don't go to the bottom.	

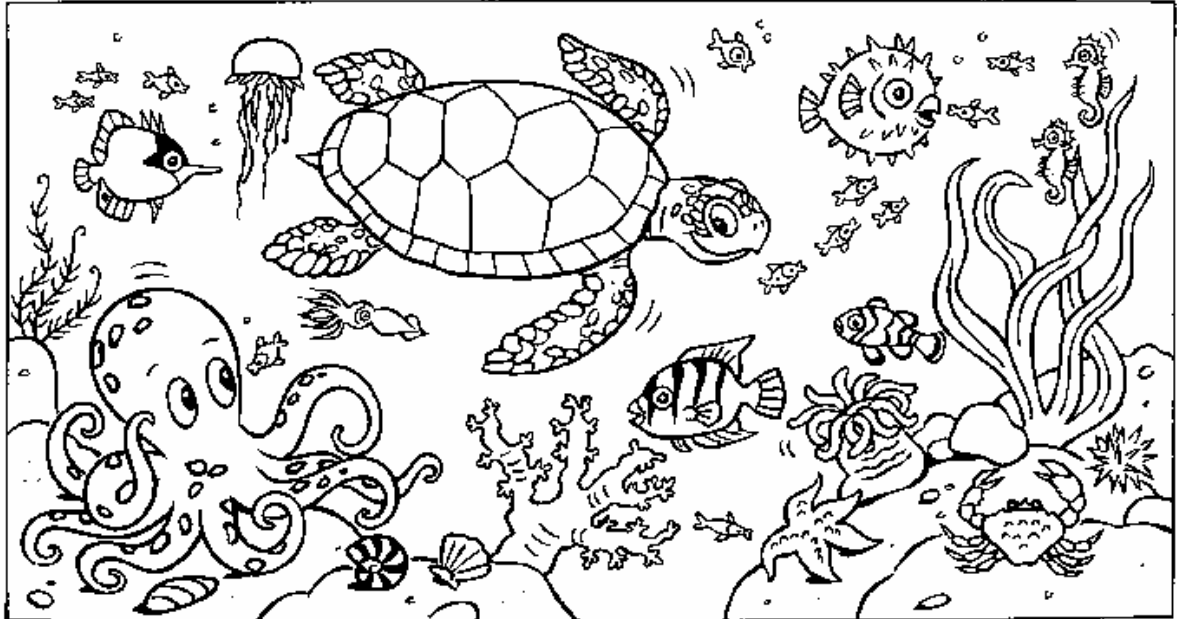
- Now write the name of the species in the table for each different method of fishing:

herring - prawns - tuna - cod - mackerel - lobster



FISHING DIFFERENCES (A)

- Look at your picture and try to describe it to your partner to spot 5 differences. Draw a circle around them.



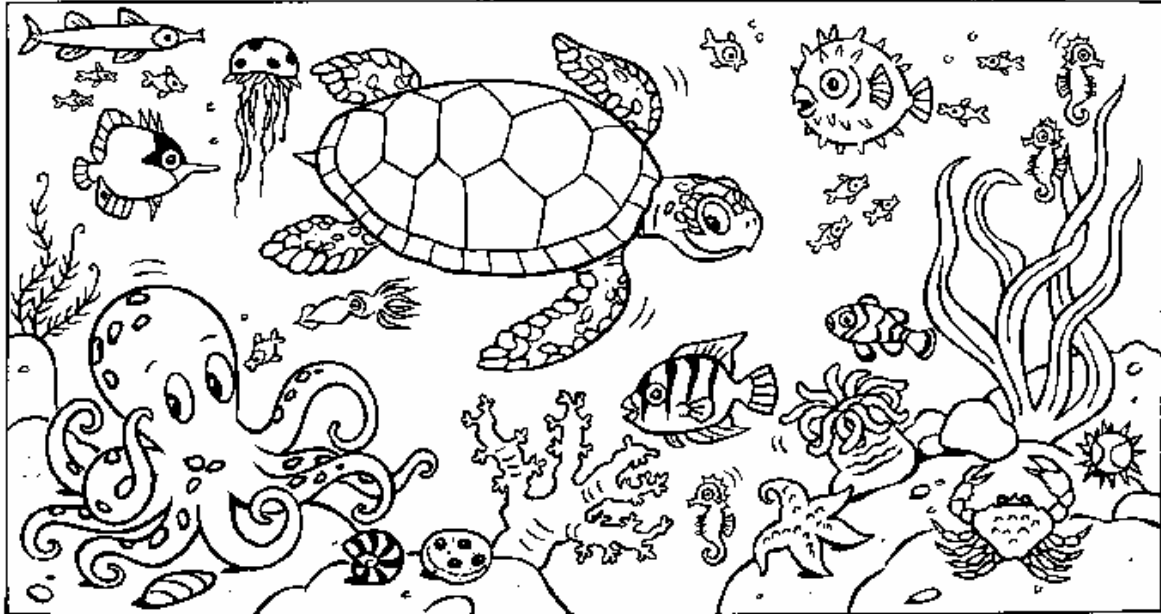
I can I can't	see	a an	fish octopus jellyfish (...)	under the sea in the water
There is/ isn't There are/ aren't				
The	angelfish seahorse (...)	is	swimming	to the right/left

- Now use the substitution table and write two sentences:



FISHING DIFFERENCES (B)

- Look at your picture and try to describe it to your partner to spot 5 differences. Draw a circle around them.



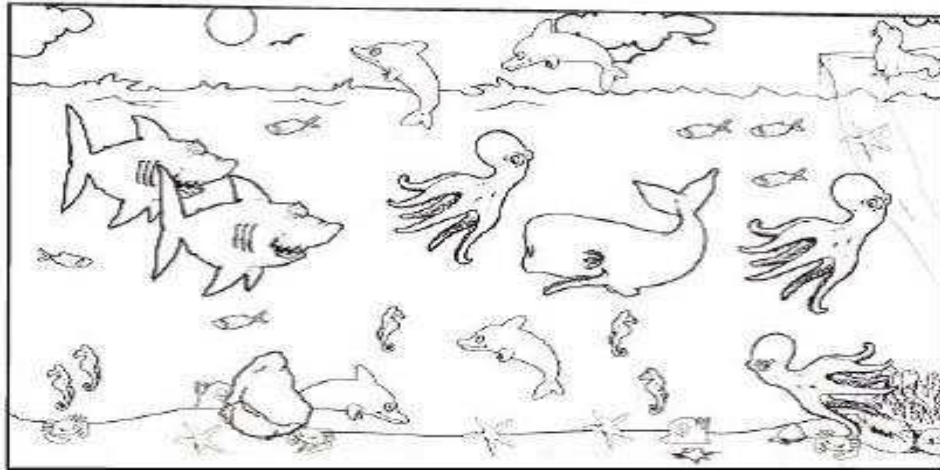
I can I can't	see	a an	fish octopus jellyfish (...)	under the sea in the water
There is/ isn't There are/ aren't				
The	angelfish seahorse (...)	is	swimming	to the right/left

- Now use the substitution table and write two sentences:



SEA SAYINGS

- Match each saying with its correct meaning from the box:



1. John speaks no Catalan. He feels like a fish out of water.

2. Liz and me are not good at reading. We are in the same boat.

3. I can't go to the park with you. I have other fish to fry.

4. He is not my friend but there are plenty more fish in the sea.

a) To be in a similar situation.
b) To be uncomfortable.

b) To have other choices.
d) To have other things to do.



BUYING FISH

- Read the text and fill in the gaps with words from the box:

'In the city of Barcelona, fish is sold from Monday to Friday. In the port, there is a place called the fish _____. It is there where fish _____ take place. _____ try to buy boxes of fish at low prices in order to sell them in their fish shops. There are two auctions every day, one in the morning for _____ fish and one in the evening for _____ fish and _____. There is a very big food market where little fish _____ can buy their fish. It is called _____. One of the most popular markets in the city is '_____ ' in 'La Ramblas'.'

auctions	market	white
Fishmongers	La Boqueria	fishmonger's
Mercabarna	shellfish	oily



AT THE FISHMONGER'S

a) What's the name of this fish?

b) How much is it?

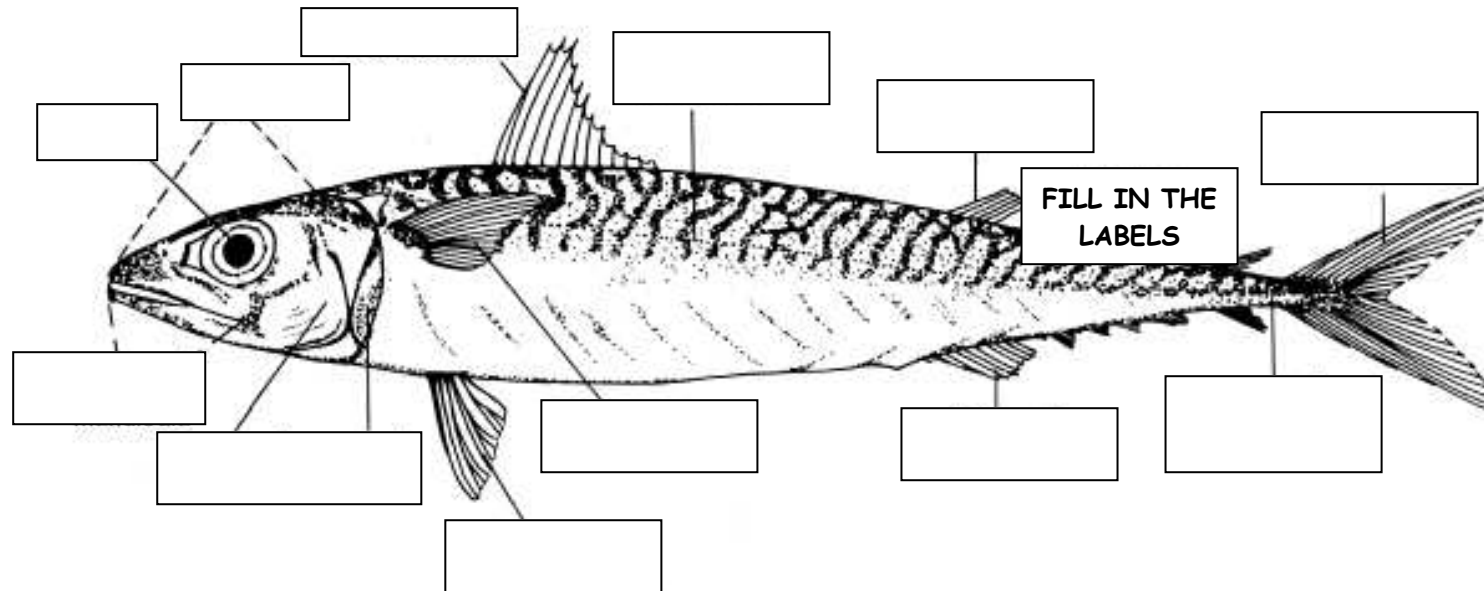
c) What type of fish is it, oily or white?

d) Where is it from?

e) Do you always sell it?



THE BODY OF A FISH



- In the HEAD, we can see...

- * the eyes: big and round, one in each side of the head
- * the mouth: with different rows of teeth
- * the nose: with holes to smell
- * the gills: used to breath

- In the BODY, we can see...

- * the pectoral & ventral fins, to swim, turn or stay still
- * the dorsal fin

- In the TAIL, we can see...

- * the anus and the anal fin
- * the caudal fin: used to get up speed



OBSERVING A SARDINE

- Look at the fish you have and identify its main parts:

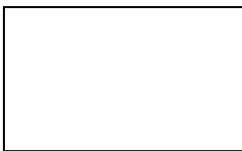
- head (eyes, mouth, nose, gills)
- body (pectoral, ventral and dorsal fins)
- tail (anus, anal and caudal fin)

- Draw it in the box and colour it. Is it all the same colour? _____.



- Open its mouth, what colour is it? _____. Does it have teeth? _____. Does it have tongue? _____.

- Look at the body, does it have scales? _____. Does it have a lot? _____. Can you take them out easily? _____.



← Have a look at one scale with the magnifying glass and draw it in the box.

- How many dorsal fins does a sardine have? _____.

How many ventral fins does a sardine have? _____.

How many pectoral fins does a sardine have? _____.

How many anal fins does a sardine have? _____.

How many caudal fins does a sardine have? _____.

- Take out all the flesh with the tweezers, can you see the skeleton? _____. What's its name? _____.



OPEN ASSESSMENT SHEET

- Write and draw as many things as you can about what you have learned in this unit.



A large, empty rectangular box with a thick black border, intended for a drawing.



I'M A LITTLE YELLOW FISH

Help I'm A Fish (I'm A Little Yellow Fish) by Little Trees

I'm a little yellow fish (yellow
fish, yellow fish, yellow fish,
yellow fish)

I'm a little yellow fish (yellow
fish, yellow fish, yellow fish,
yellow fish)

(Chorus)

I'm a little yellow fish in the deep
blue sea,
won't somebody help me? (help
me, Help me)

I'm a little yellow fish in the deep
blue sea,
won't somebody save me? (save
me, save me)

Do you wanna know how
living is beneath the waves? (the
waves, the waves)

Do you wanna know how
everything I knew was changed?
(was changed, was changed)

(Bridge)

It wasn't such a big commotion,
I just have a drop of magic potion
with a wriggle, a twist,
a splash and a splish, I was a fish,
Help me!

(Chorus)

Do you wanna take a whale bus?
Wanna meet a stupid shark?
(shark, shark, shark)
Do you wanna ride a seahorse
or hide in an oyster park? (park ,
park, park)

It wasn't such a big commotion,
all you need is magic potion
with a wriggle, a twist,
a splash and a splish, you're a fish,
Help me!

(Chorus)

Help me, Help Me I need a
remedy,
Help me, Help Me I need a
remedy.

Life is strange at the bottom of
the ocean,
you won't believe the things you
see!

Stay ashore, dont give in to
notions,
if you don't wanna be like me!
(Chorus)