

EL QUE QUIERA ENTENDER QUE ENTIENDA

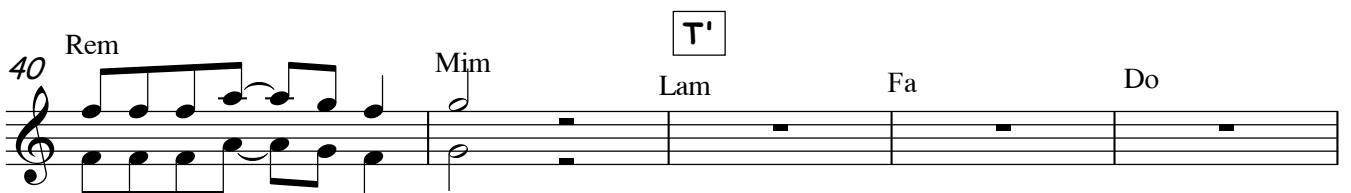
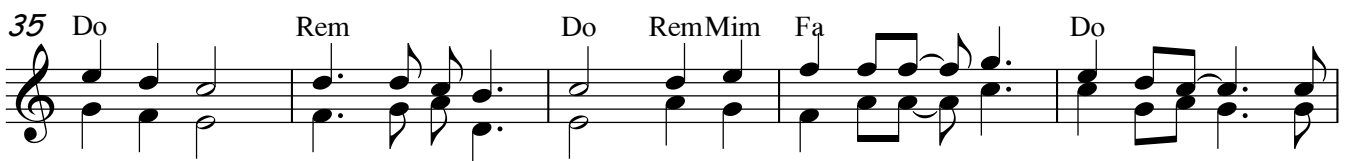
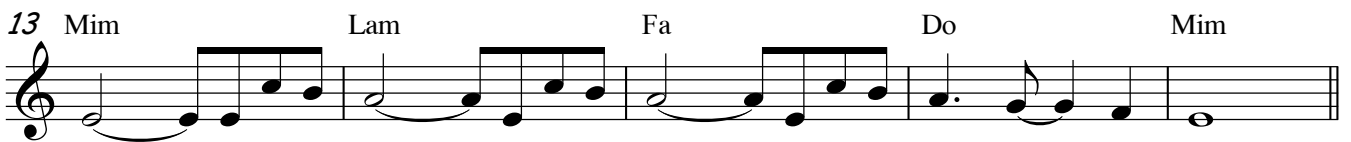
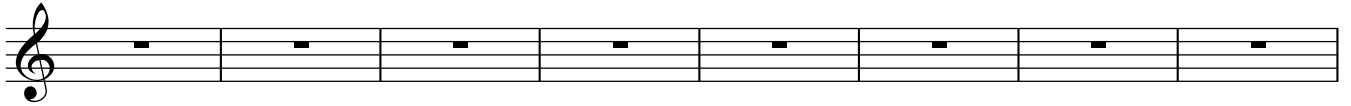
Flauta 1 - 2/guitarra

Vivace

El Mago de Oz
Arranj. Cristina Duran

INTRO/T

Lam Fa Do Mi Lam Fa Do



45 Sol Lam Fa Do

49 Sol Solo 1 Lam Fa Do

53 Mim Solo 2 Lam Fa Do Fi. A Coda

57 Mim Solo 3-4 Lam Do Do Mim

62 Lam Do Do Re CODA