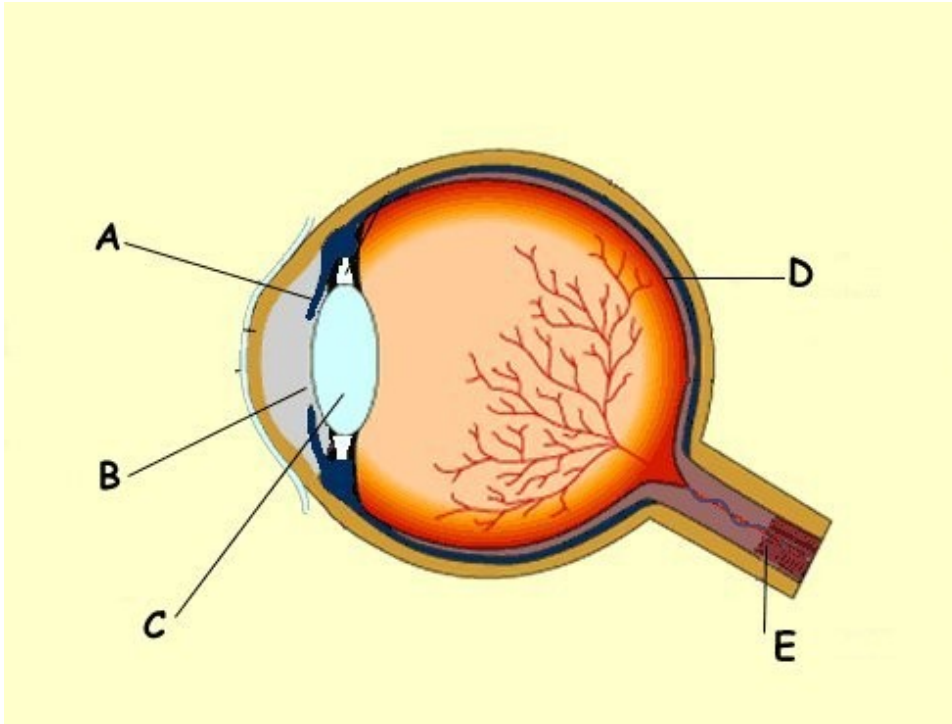


The eye

1. Label the diagram of the eye.

Pupil - retina - optic nerve - lens - iris



2. Complete the table using the following sentences:

- It's the hole which light enters.
- It's the coloured part of the eye. It controls the amount of light entering the eye.
- It is located at the back of the eye. It is sensitive to light and colour

Part	Name	What it does
A	Iris	
B		
		Focuses light
	Retina	
		Sends information to the brain