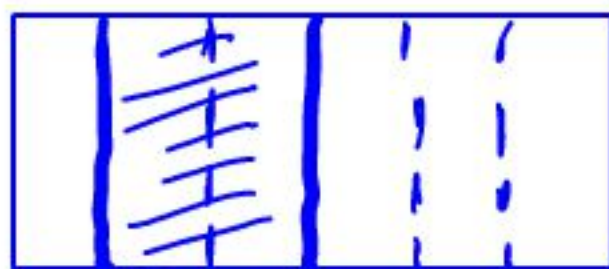
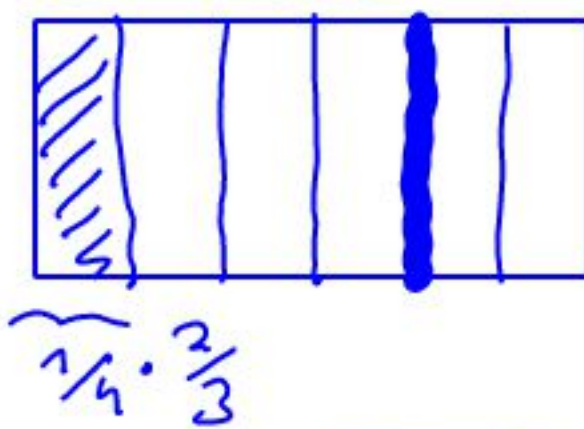
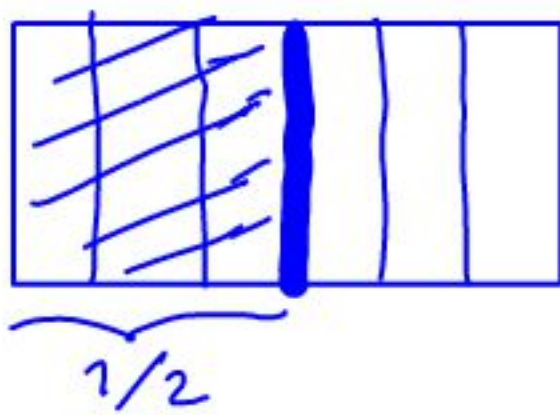


460-30/09/13

$$\textcircled{1} \quad \frac{1}{2} - \frac{1}{4} \cdot \frac{2}{3} = \frac{1}{2} - \frac{1}{2 \cdot 3} = \frac{1}{2} - \frac{1}{6} = \frac{3-1}{6} = \frac{2}{6} = \frac{1}{3}$$



$$\textcircled{2} \quad 80 \text{ €} \xrightarrow{+20\%} 1,2 \cdot 80 \text{ €} \xrightarrow{-20\%} 0,8 \cdot 1,2 \cdot 80 \text{ €} = 0,96 \cdot 80 = 76,80 \text{ €}$$

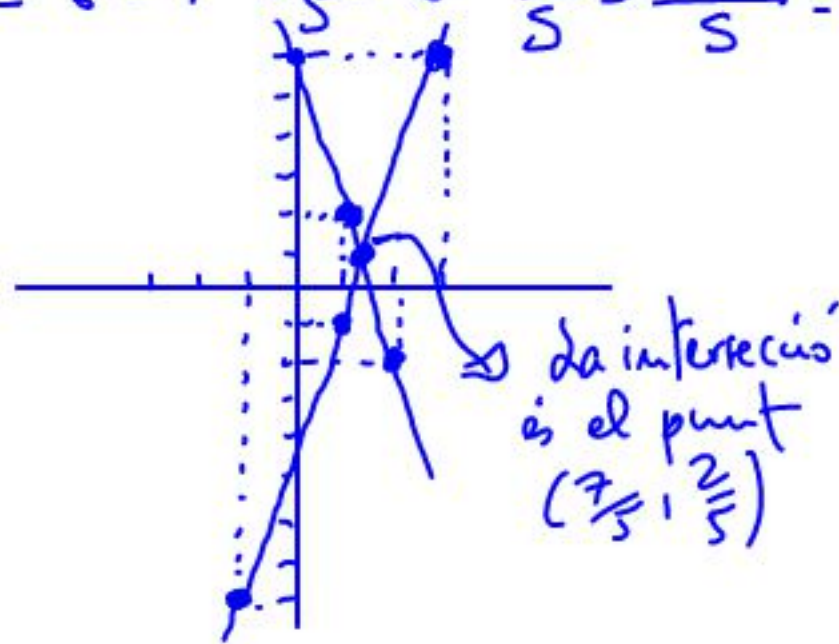
$$\textcircled{3} \quad 500 \text{ €} \xrightarrow{1 \text{ any}} 1,025 \cdot 500 \xrightarrow{2 \text{ any}} 1,025^2 \cdot 500 \xrightarrow{\dots} \xrightarrow{5 \text{ any}} 1,025^5 \cdot 500 = 565,70 \text{ €}$$

$$\textcircled{4} \quad \begin{cases} E_1: 12x + 3y = 18 \\ E_2: 7x - 2y = 9 \end{cases} \Leftrightarrow \begin{cases} 2 \cdot E_1: 24x + 6y = 36 \\ 3 \cdot E_2: 21x - 6y = 27 \end{cases} \Rightarrow x = \frac{63}{45} = \frac{7}{5}$$

$$E_1: y = \frac{18 - 12x}{3} = 6 - 4x = 6 - 4 \cdot \frac{7}{5} = 6 - \frac{28}{5} = \frac{30 - 28}{5} = \frac{2}{5}$$

$x = \frac{7}{5}$
 $y = \frac{2}{5}$

E_1		E_2	
x	y = 6 - 4x	x	7x - 9
0	6	1	-1
1	2	3	6
2	-2	-1	-8



da intersecció
és el punt
 $(\frac{7}{5}, \frac{2}{5})$

↳ Comparació de preu!

$$\textcircled{5} \text{ a) } 3 - 2x = x + \frac{1}{4} \Leftrightarrow 12 - 8x = 4x + 1$$

$$\Leftrightarrow 12 - 1 = 4x + 8x \Leftrightarrow 11 = 12x \Leftrightarrow x = \frac{11}{12}$$

$$\text{b) } 7 + \frac{3-2x}{12} = \frac{x}{8} \Leftrightarrow 168 + 6 - 4x = 3x$$

$$\Leftrightarrow 174 = 7x \Leftrightarrow x = \frac{174}{7}$$

$$\text{c) } (x+3)^2 - \frac{1}{4} = 0 \Leftrightarrow (x+3)^2 = \frac{1}{4} \Leftrightarrow x+3 = \pm \frac{1}{2}$$

$$\Leftrightarrow x = \pm \frac{1}{2} - 3 = \frac{\pm 1 - 6}{2} = \begin{matrix} -5/2 \\ -7/2 \end{matrix}$$

$$\text{d) } 2x^2 - 3x - 2 = 0 \Leftrightarrow x = \frac{3 \pm \sqrt{9 + 16}}{4} = \frac{3 \pm 5}{4} = \begin{matrix} 2 \\ -1/2 \end{matrix}$$

Comprovació de l'exercici $\textcircled{4}$

$$12 \cdot \frac{7}{5} + 3 \cdot \frac{2}{5} = \frac{84 + 6}{5} = \frac{90}{5} = 18 \quad \left\{ \text{be'!} \right.$$

$$7 \cdot \frac{7}{5} - 2 \cdot \frac{2}{5} = \frac{49 - 4}{5} = \frac{45}{5} = 9$$