

K n o t

NOMÉS AMB TU

K n o t

per

XEVI ALTESA

♩ = 110

Animal

1 A C#7 D E A D

6 A A D E7 A D A

11 A D E A D A

15 A D E7 A D A

19 A D E A D A

23 A D E A C#7

27 F#m D E A C#7

31 F#m D E A D A A D E

37 A D A A D E

41 A D A A D E7

K a r a o n o t e s

45 A C#7 F#m D E

49 A C#7 F#m D E

53 A C#7 D E

57 A C#7 D E

61 E A C#7 F#m

65 D E A C#7 F#m D E

70 A C#7 F#m D E A D A

76 A D E A D

79 A A D A

K n o t

NOMÉS AMB TU

K n o t

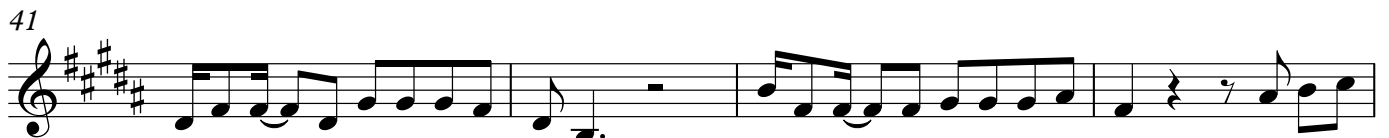
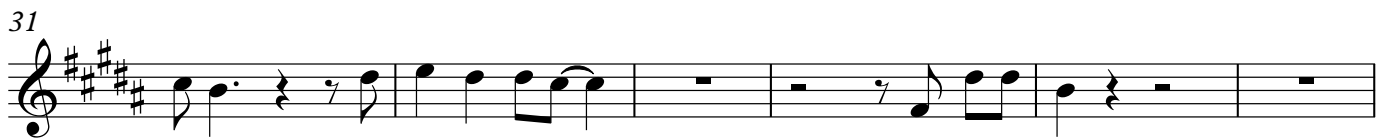
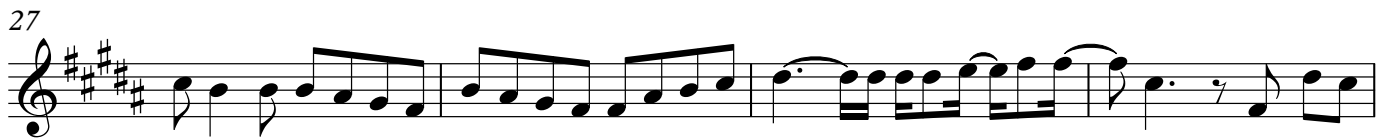
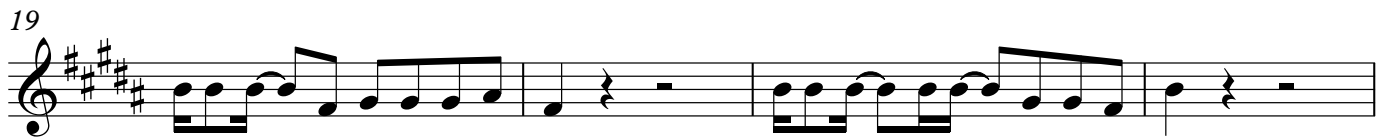
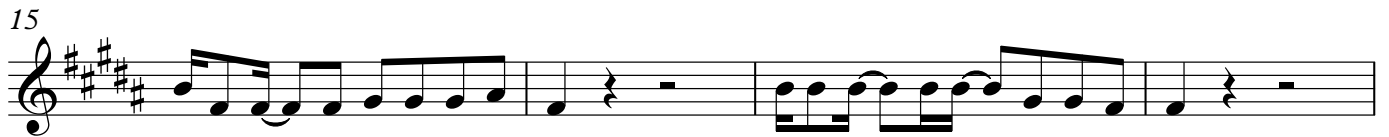
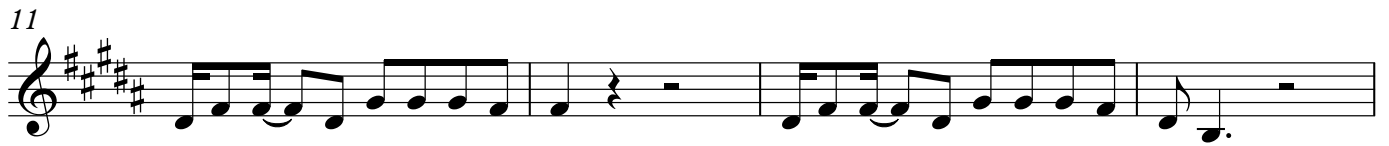
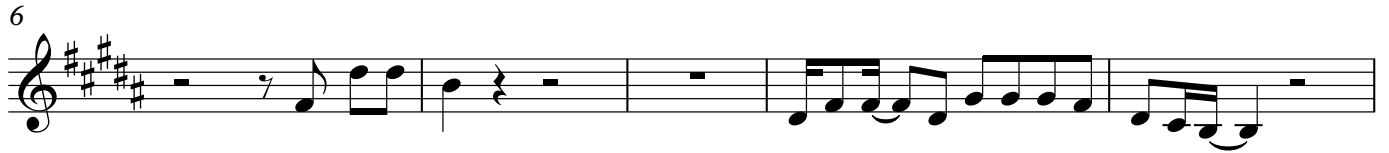
per

XEVI ALTESA

♩ = 110

B^b

Animal



K a r a o n o t e s

45



49



53



57



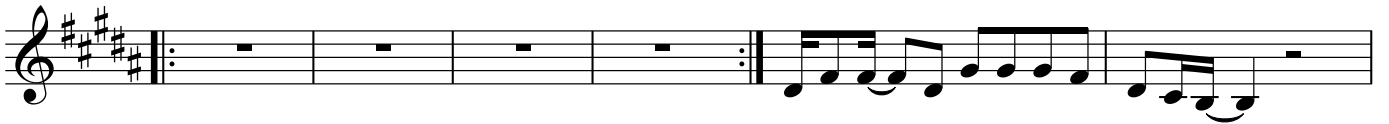
61



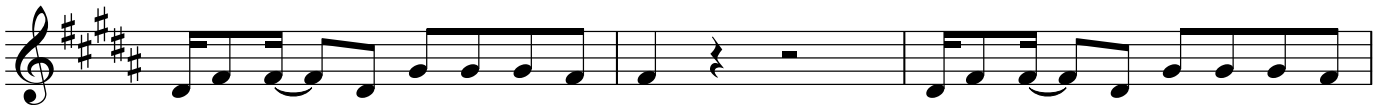
65



70



76



79



K n o t

NOMÉS AMB TU

K n o t

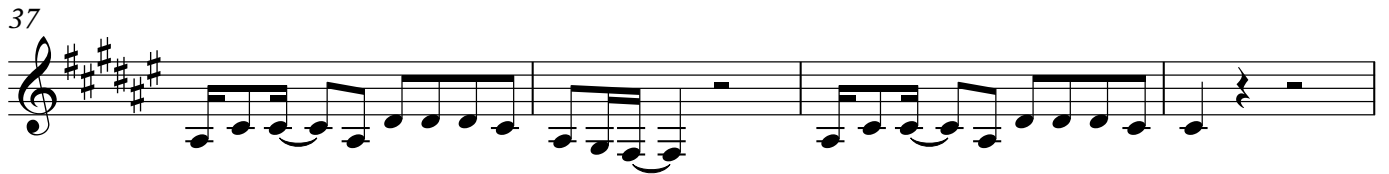
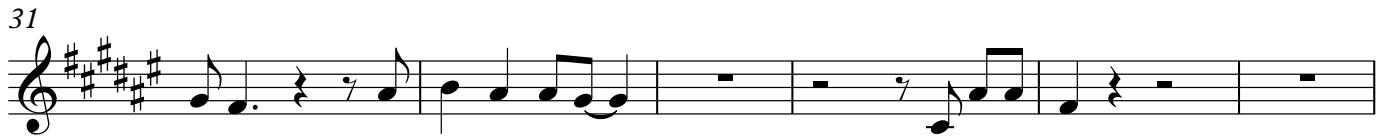
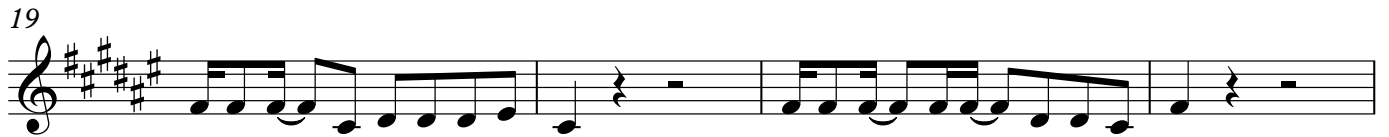
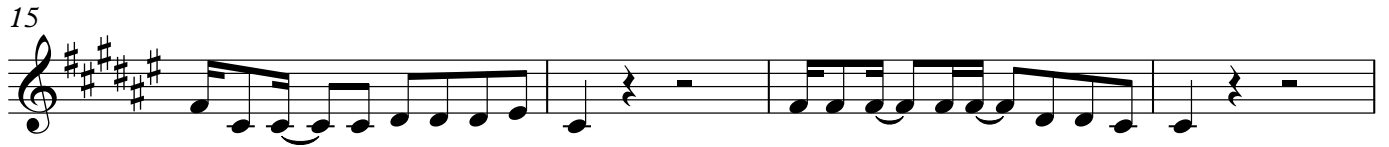
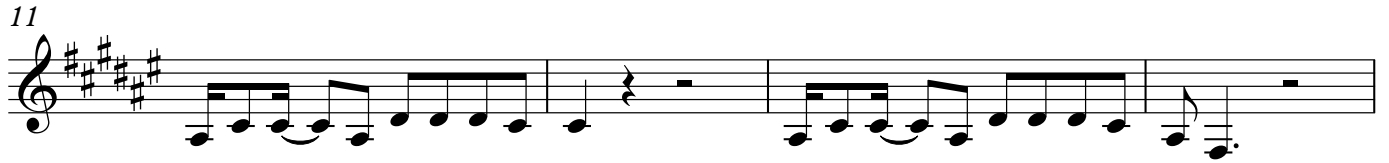
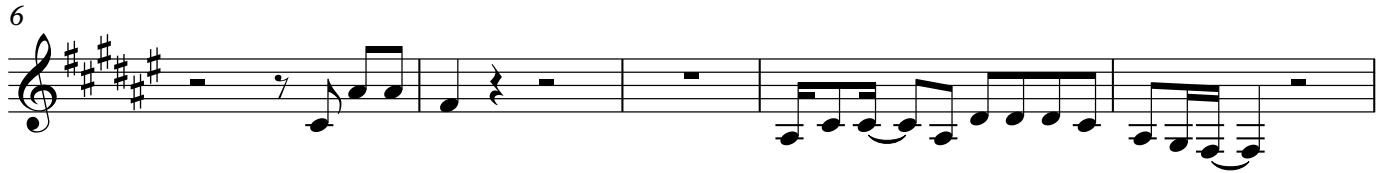
per

XEVI ALTESA

♩ = 110

E^b

Animal



K a r a o n o t e s

45



49



53



57



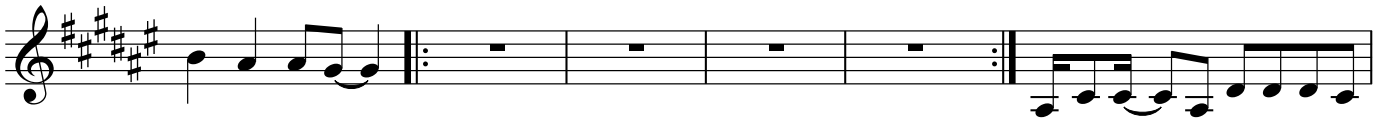
61



65



69



75



78

